

Codonics® SLS® Administration Tool Software

Release Notes

Version 2.0.0 SLS Administration Tool Release Notes

Summary

Version 2.0.0 is a software release for Codonics Safe Label System® (SLS) Administration Tool (AT). The software is compatible with SLS 500i® Point of Care Stations (PCS) installed with 2.0.0 software. As of this release, this version of software is considered the most current stable, safe and effective version for SLS PCS.

This document provides information about New Features (i.e., Adaptive Updates), Product Improvements (i.e., Perfective Updates) and Product Corrections (i.e., Corrective Updates) in 2.0.0 SLS software.

The SLS AT User's Manual version 1.3.0 and User's Manual Addendum 1.8.0 provides further information about the AT.

Recommended PC Requirements for AT Stand-alone

Hardware:

- ◆ Intel Core™ 2 Duo Processor 2.66 GHz (or faster)
- ◆ 4 GB RAM
- ◆ Minimum 5 GB hard drive space

Software:

- ◆ Windows® XP or newer
- ◆ Internet Explorer 8 or newer
- ◆ Excel 2003 or greater to open reports

Additional Feature:

- ◆ Configurable inactivity logout: Maximum 8 hours.

Recommended Requirements for AT Server

Hardware:

- ◆ Intel Quad Core (i5, i7 or Xeon) with 2 cores allocated to AT
- ◆ 8 GB RAM
- ◆ Hard Drive Space: Minimum 5 GB free hard drive space for application

Software:

- ◆ Windows Server 2008, 2012
- ◆ Concurrent access: Not supported

Recommended Requirements for AT Client

Hardware:

- ◆ Minimum screen resolution: 1440 x 900; use default browser fonts.

Software:

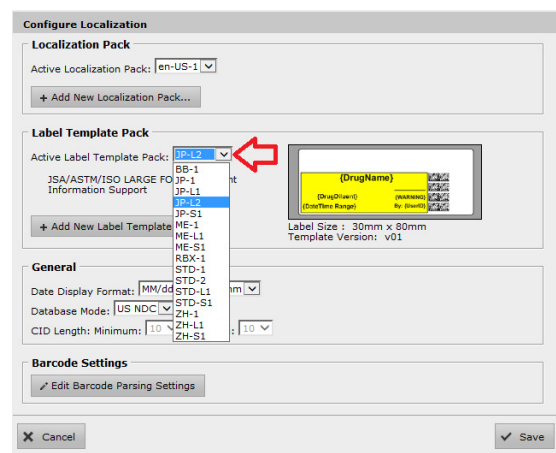
- ◆ Windows XP, Vista, Windows 7
- ◆ Internet Explorer 8 through 11
- ◆ Excel 2003 or greater to open reports

Additional Feature:

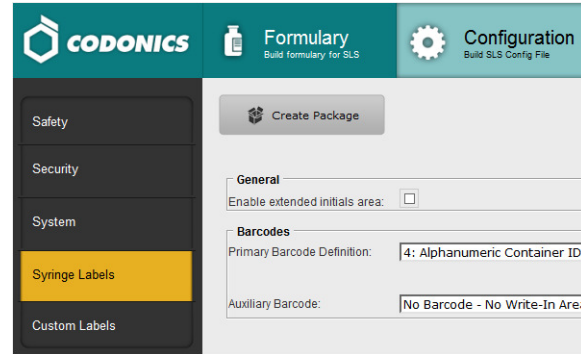
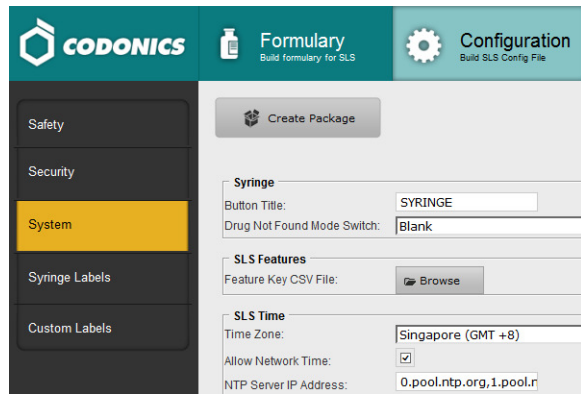
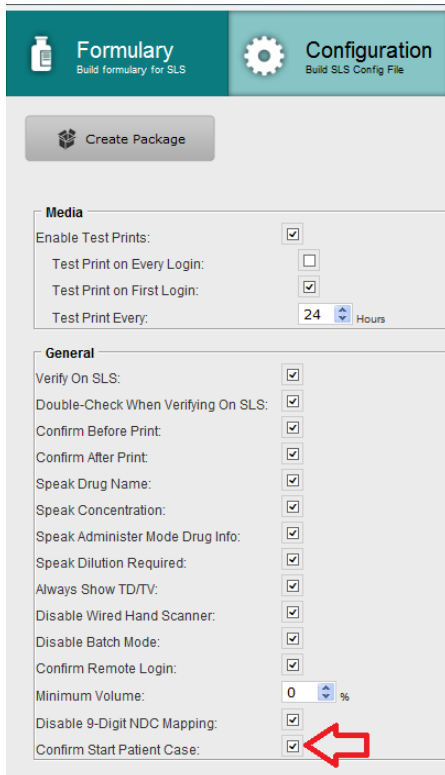
- ◆ Configurable inactivity logout: Maximum 8 hours.

New Features

- ◆ **Support for new Japanese label templates that include patient information.** These new label templates are identified as JP-L2 for the large labels and JP-2 for the standard labels. To select a label template, click on Configure Locale in the lower left of the AT. Then click on the Active Label Template Pack drop down and select the label template pack needed.



- ◆ A new safety setting, **Confirm Start Patient Case**, is included for **Patient Information**. SLS can now receive patient information (e.g., Patient Name, Patient ID, Order ID, Patient Date of Birth, Patient Weight) from approved third party equipment. By default, when a new patient case is started on SLS PCS, a message is displayed on the screen. In order to turn off the message, uncheck the **Confirm Start Patient Case** setting in the Configuration Tab of the AT. Then create a Configuration Package and deploy to SLS PCS.



- ◆ The AT and SLS PCS support new drug names. The drug names are acetaminophen with codeine, alemtuzumab, amphotericin B, basiliximab, benzylpenicillin, carbetocin, colistimethale, crystalline penicillin, cyclosporine prednisone, dimenhydrinate, hemocoagulase, hydroxyethyl starch, intralipid, isoprenaline, liothyroinine, magic mouth wash, marcain heavy, nefopam hydrochloride, onabotulinumtoxin A, oxycodone hydrochloride hydrate, palonosetron, potassium phosphate, propacetamol, risperidone, sodium hypochlorite, sodium phosphate, and vitamin.
- ◆ The AT and SLS PCS support new concentration numbers. The numbers are 0.128, 0.86, 3.5, and 1600.

Product Improvements

- ◆ The Configuration Tab was reorganized. The System tab now contains the following configuration settings: Syringe, SLS Features and SLS Time. A new Syringe Labels tab contains the following configuration settings: General and Barcodes.

Product Corrections

- ◆ The AT Migration Utility was corrected to handle issues with certain database entries. When migrating from software versions prior to 1.8.0 up to software version 1.9.0, if certain database entries were present (e.g., | from a scanned barcode symbology or certain Drug Not Found events) the migration utility didn't work. The AT Migration Utility now works in those cases.

Known Common Issues

This section details common issues with 2.0.0 AT software that are likely to be experienced by most users.

- ◆ **WARNING: The formulary report does not sort duplicates.** Duplicate Container IDs in the formulary are reported but are displayed in a way that may not put the duplicates together. You can sort the Excel spreadsheet on Container ID.
- ◆ **WARNING: Replacing drug names with non-Latin characters (e.g., Kanji, Hebrew) causes duplicate drug entries in the MDD.** When the MDD screen is sorted by drug name, changing a drug name to start with a non-Latin character causes the drug to display twice. When the issue occurs, editing either of the duplicate drug entries on the MDD changes the other entry properly. Resorting the MDD list or refreshing the MDD by switching to another page in the AT and then back causes the drug name to only display once, sorted after the names that start with Latin characters. If the drug is already in the SLS PCS formulary, then the drug name will display with the changed characters in the formulary and will be listed only once.
- ◆ **WARNING: The pre-import report does not identify duplicate drug IDs when importing via a CSV.** You are required to run a formulary report before generating an approved formulary and should review the Duplicate reports in the Safety worksheet to make sure all duplicates or potential duplicates in the MDD and formulary are identified.

Known Uncommon Issues

This section details uncommon issues with 2.0.0 AT software that are unlikely to be experienced by most users.

- ◆ **WARNING: If a drug record is modified in the MDD after it has been added to the formulary, the AT does not automatically update the audio file association.** If the drug name is changed in the MDD, the associated audio file will not change, resulting in a possible incorrect association. As a work around, you can either remove and then add the drug to the formulary to trigger a new audio file association, or manually select the correct audio file from the formulary edit dialog box.
- ◆ **WARNING: A concentration length of greater than 15 characters is converted to an incorrect value in the MDD when imported.** For example, a number such as 12345678901234567890 is converted to 92,233,720,368,547.77.
- ◆ **WARNING: Combination drugs with long drug names do not display the second drug name.** Combination drugs with very long drug names only display the first drug name as truncated. There is no indication as to what the second drug name is. Users should look to modify the entry of the drug name (e.g., Calcium can be entered as Ca). Another option is to enter the drug name in the Tallman field of the AT which will reduce the font size.

Technical Support

If problems occur during software installation or operation, contact Codonics Technical Support at any time.

Phone: +1.440.243.1198

Email: support@codonics.com

Website: www.codonics.com

Get it all with just one call
800.444.1198

All registered and unregistered trademarks are the property of their respective owners. Specifications subject to change without notice. Patents pending.

Copyright © 2010-2015 Codonics, Inc. Printed in the U.S.A. Part No. 901-245-015.01.



17991 Englewood Drive
Middleburg Heights, OH
44130 USA
+1.440.243.1198
+1.440.243.1334 Fax
Email info@codonics.com
www.codonics.com

Codonics Trading Co, Ltd.
317 Xianxia Rd. Building B
Unit 1412
Changning Dist., Shanghai
P.R. China, 200051
86-21-62787701
86-21-62787719 Fax

Codonics Limited KK
AQUACITY 9F,
4-16-23, Shibaura
Minato-ku, Tokyo,
108-0023 JAPAN
81-3-5730-2297
81-3-5730-2295 Fax