

Codonics SLS Administration Tool Software

Release Notes

Version 1.4.0 SLS Administration Tool (AT) Release Notes

Summary

Version 1.4.0 AT software is a software release for Codonics Safe Label System™ (SLS) AT. The software is compatible with SLS 500i™ systems installed with 1.4.0 software.

This document provides information about new product features, improvements and defects corrected in 1.4.0 SLS AT software. The SLS AT User's Manual version 1.3.0 provides further information about the AT.

Minimum PC requirements for AT:

Intel Core™ 2 Duo Processor
2 GB RAM
2 GHz
Windows® XP or newer
Oracle® Java® 6 (also referred to as version 1.6), update 23 or higher, 32-bit only
Internet Explore 8 (IE8)
Excel 2003 or greater to open reports

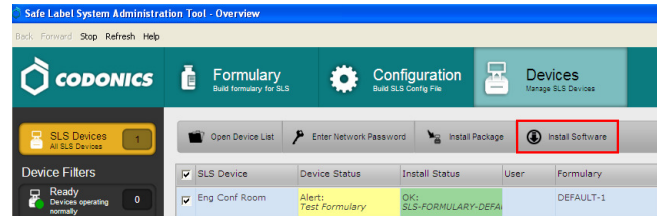
Recommended PC requirements for AT:

Intel Core™ 2 Duo Processor
4 GB RAM with 64 bit
2.66 GHz
Windows® XP or newer
Oracle® Java® 6 (also referred to as version 1.6), update 23 or higher, 32-bit only
IE8
Excel 2003 or greater to open reports

New Features

- ◆ The AT now has the ability to select or enter Total Dose (TD) and Total Volume (TV) for a syringe. The TD and TV as well as the equivalent concentration will be displayed on 500i user interface and print on the label. Refer to Codonics Total Dose/Total Volume Technical Brief (901-259-001) for complete instructions.
- ◆ The AT now provides the ability to remotely install software updates via wired (i.e., Ethernet) and wireless (i.e., Wi-Fi) networks.

After installing the 1.4.0 AT, start-up the AT and from the AT-DM, select 500i units that you want to install software. Next, select Install Software.

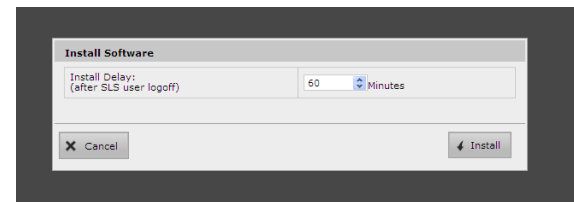


NOTE: Upgrading the software on 500i will erase the formulary on that system. A new formulary package should be created before upgrading 500i software.

An Install Software window will open asking for the user to set the amount of time to delay the install after the time a user logs off 500i. Select Install.

NOTE: When deploying a software update to 500i, make sure there isn't a USB install drive or USB drive with packages (e.g., formulary) inserted into 500i. This can cause issues with properly installing a software update.

NOTE: Upgrade via the network does not require removing 500i SmartDrive which is required when performing a manual install.



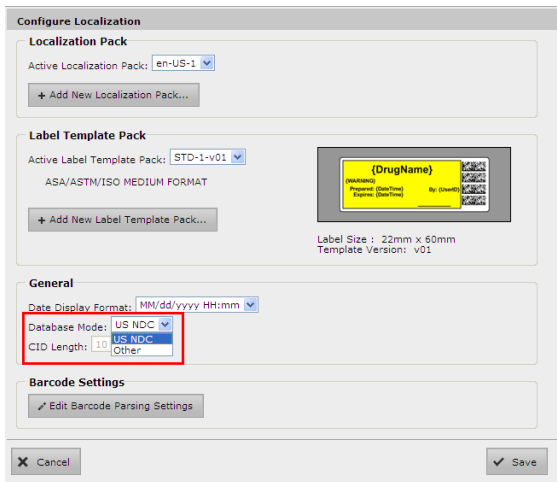
- ◆ The AT now supports 80 x 30 mm labels. These labels are typically used for larger syringes (20 mL or larger). Refer to Codonics Localization Configuration Improvements Technical Brief (901-261-001) for setting the templates in the AT.

NOTE: Make sure that the label template pack that is deployed to 500i is the same as the labels installed. If a small label (48 x17 mm) template pack is deployed to 500i and large labels (80 x 30 mm) are installed, then the printed area on the label will be small.

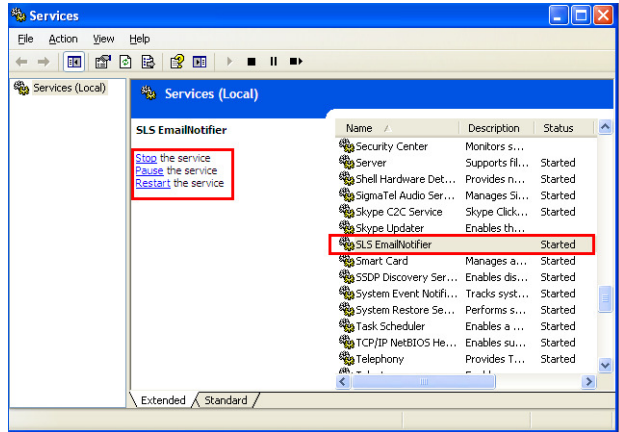
- ◆ The AT now supports 48 x 17 mm labels. These labels are typically used for smaller syringes (10 mL or less). Refer to Codonics Localization Configuration Improvements Technical Brief (901-261-001) for setting the templates in the AT.

NOTE: Make sure that the label template pack that is deployed to 500i is the same as the labels installed. If a large label (80 x 30 mm) template pack is deployed to 500i and small labels (48 x 17 mm) are installed, then 500i will print outside the small label and ink will be sprayed inside the device.

- ◆ SLS now provides support for alphanumeric codes up to 13 characters. When Database Mode is set to Other mode in the AT, you can create a rule (refer to Codonics Administration Tool Localization Enhancements Technical Brief 901-261-001) and select a barcode symbology that will support alphanumeric codes. After a formulary is created with alphanumeric codes (e.g., 0010-28-061-J) and deployed to 500i, scanning of barcodes with alphanumeric codes is supported.



- ◆ The Email Notifier (EN) application is now available as a service with the AT. As a service, the EN can run without being logged into the computer it is running on. The service can be started up and shut down. Refer to the Read Me file included with the EN for setup instructions.



Product Improvements

- ◆ An automatic installation and automatic migration utility is included with the AT. It is provided to install the 1.4.0 AT and migrate formularies created with formularies prior to 1.4.0 software. It is included on the AT disc and operational instructions are included in the AT User's Manual version 1.3.0.

WARNING: Before migrating data, make sure to document settings that will not be migrated (currently custom WAV files). Further migration instructions are provided in Codonics Administration Tool Migration Utility Technical Brief 901-253-002.

- ◆ The barcode symbology EAN-13 displayed in the AT is now supported on 500i.
- ◆ The barcode symbology Interleaved 2 of 5 in US NDC mode displayed in the AT is now supported on 500i.
- ◆ Support is now provided for localization of all concentration units (e.g., Units, Units/mL, etc.).
- ◆ The Formulary Verification worksheet in the Formulary Report now lists all the drugs in the formulary and their statuses. Previously, the Formulary Report only displayed the unverified drugs.

- ◆ **The dilution concentrations in the formulary are now organized the same as the Master Drug Database (MDD).** The dilutions are organized by number and then alphabetically by concentration unit.
- ◆ **SLS support new drug name WAV files.** The new drug name WAV files included are Acetylcysteine, Cyanocobalamin, Dehydrated Alcohol, Thiamine, Acetylcholine, Butorphanol, Caffeine, Dalteparin, Enalaprilat, Fat Emulsion, Hepatitis B Vaccine, Insulin NPH, Iodixanol, Iohexol, Lidocaine with Dextrose, Lactated Ringers, Penicillin, Plasma Protein Factor, Sodium Tetradecyl Sulfate, Tetanus Diphtheria Toxoi, Augmentin, Cloxacillin, Ergometrine, Esomeprazole, Factor VIII, Glyceryl Trinitrate, Nimodipine, Penicillin G, Pethidine, Somatostatin, Suxamethonium, Tramadol, Heparinized Saline, Adrenaline, and Noradrenaline.
- ◆ **SLS support new concentration numbers.** The new numbers included are 0.064, 0.12, 0.16, 1.875, 4.2, and 12.5.
- ◆ **The AT and 500i support new concentration units.** The new concentration units included are ea (i.e., each), mcg/INH, M Units/mL with the WAV file being Million Units per Milliliter.
- ◆ **The Lexicomp filters are now alphabetized.**
- ◆ **An additional text color was provided.** #890C58 (shade of purple) was added as a text color option in the Custom Template Definition of the AT.
- ◆ **Previously when an empty CSV file was imported an error message appeared that said undefined.** Now, when an empty CSV file is verified at import, it will return success, and zero drugs will be reported as available for import.
- ◆ **Previously, if the WAV file was no longer available when migration occurred, the name of the WAV file still showed in the formulary.** If the WAV file is no longer available, it now shows as No Audio after migration.
- ◆ **Previously, some anti-virus software could automatically delete temp folder contents making the AT unusable.** The AT installation procedure was changed to prevent deleting of folder/files and thus will not make the AT unusable if anti-virus software is run.
- ◆ **Previously if you waited weeks to start your Email Notifier when installing 500i's on your network, the possible size of an email could be 100MB or larger and could lead to failure on most networks.** The size (MB) was decreased to approximately 10% of its original size so that the Email Notifier won't fail. However, it is still recommended to start your Notifier when you install 500i's on your network.
- ◆ **Previously, if the AT was uninstalled while it was running, the uninstaller would not remove all the files.** The uninstaller now removes all required files.

Defects Corrected

- ◆ **Previously, AT pre- and post-import reports showed all text in red color, even warnings and normal operations.** Now, errors are in red, warnings are in amber, normal additions are in green, and everything else is in black.
- ◆ **Previously, the Formulary Report showed all the diluents (i.e. Normal Saline, Sterile Water, D5W, Other) when the dilution status was set to Not Allowed.** Now, N/A is displayed in the report.
- ◆ **Previously, concentrations (e.g., units/mL) on import were case sensitive and did not match existing WAV files.** Now, if the imported concentration is a different case than the MDD's case (e.g., units/mL vs. Units/mL), it will import and properly match.
- ◆ **Previously, a user would need to restart the AT when they encountered an inability to accept an import and could not dismiss the error message.** Now, an OK button is displayed and causes the AT to revert the import.
- ◆ **Previously, a Lexicomp import was allowed in Other mode.** Since Lexicomp is currently only used in the U.S., Other mode is not needed and is no longer supported.
- ◆ **Previously, when uninstalling the AT, the shortcuts were not removed when using Windows Vista and 7.**
- ◆ **Previously, the drug selected counter at the bottom of both the MDD and formulary did not update when a selected group of drugs were individually deleted.** The count now properly updates.
- ◆ **Previously, the AT would fail installation if the computer was using Java 7.** There is now support for Java 7.
- ◆ **Previously, entering only a space in the Tallman field would cause a critical application error when the label is printed on 500i.** Now there is a check done on the AT and a warning is reported to the AT user, if he/she tries to set a tallman that is whitespace only.

Known Common Issues

This section details common issues with 1.4.0 SLS AT software that are likely to be experienced by most users.

- ◆ **WARNING: The Formulary Report does not sort duplicates.** Duplicate Container IDs in the formulary are reported, but are displayed in a way that may not put the duplicate one right next to the other. You can sort the Excel spreadsheet on Container ID.

- ◆ **WARNING: Replacing drug names with non-Latin characters (e.g., Kanji, Hebrew) causes duplicate drug entries in the MDD.** When the MDD screen is sorted by drug name, changing a drug name to start with a non-Latin character causes the drug to display twice. When the issue occurs, editing either duplicate drug entry on the MDD changes the other entry properly. Re-sorting the MDD list or refreshing the MDD by switching to another page in the AT and then back causes the drug name to only display once, sorted after the names that start with Latin characters. If the drug is already in the 500i formulary, then the drug name will display with the changed characters in the formulary and will be listed only once.
- ◆ **WARNING: The Formulary Changes worksheet in the Formulary Report can be incomplete.** If you demote a formulary, edit an existing drug in the formulary, and then delete the drug entry in the formulary, it will be deleted from the Formulary Report when promoted, but it will not show up in the Formulary Changes worksheet.
- ◆ **WARNING: The Formulary Changes worksheet in the Formulary Report can be incomplete.** If you demote a formulary, add a drug to the MDD, add it to the formulary, then edit the drug, promote the formulary and create a report, the changes report will only show the drug was edited, but not added. The drug entry will still be shown in the Formulary Report.
- ◆ **WARNING: The Formulary Changes worksheet in the Formulary Report can be incomplete.** If you are deleting drug(s) from the MDD and then perform an Undo, there is no net change to the formulary. However, these drug(s) are reported as deleted in the Formulary Report.
- ◆ **WARNING: The pre-import report does not report duplicate drug IDs when importing via a CSV.** You are required to run a Formulary Report before generating an approved formulary, and should review the Duplicate reports in the Safety worksheet to make sure all duplicates or potential duplicates in the MDD and formulary are identified.
- ◆ **WARNING: Some warnings are not displayed when using Total Dose/Total Volume.** For example, set a drug in the formulary to use TD/TV and assign the drug a TD/TV with the same concentration units (e.g., mg/mL) as the original container concentration. Then, if you enter the MDD and change the same drug's concentration unit to a different unit (e.g., mcg/mL), the warning The units of the following entries do not match the original drug concentration units is not displayed to the user. You should review the Formulary Report to make sure all entries in a formulary are correct before installing the formulary on a 500i.
- ◆ **WARNING: Some warnings are not displayed when using Total Dose/Total Volume.** For example, set a drug in the formulary to use TD/TV and assign the drug a TD/TV with a concentration (e.g., 0.5 mg/mL) lower than the original container concentration (e.g., 1.0 mg/mL). Then, if you enter the MDD and change the original container concentration to a value lower (e.g. 0.25 mg/mL) than the TD/TV concentration entered, the message Verify concentration values. The following entries have a concentration that is higher than the original drug concentration is not displayed to the user. You should review the Formulary Report to make sure all entries in a formulary are correct before installing the formulary on a 500i.
- ◆ **WARNING: Some warnings are not displayed when using Total Dose/Total Volume.** For example, set a drug in the formulary to use TD/TV and Dilution Allowed or Dilution Required. Then add some TD/TV values where the equivalent concentration (e.g., 0.5 mg/mL) is a dilution of the original concentration (e.g., 1.0 mg/mL). After saving those values, change the Dilution Status to Dilution Not Allowed. You will not receive a warning on the AT that there are dilution values for that drug. If a formulary with these values is then installed on a 500i, when the drug is scanned with dilution switch off, the dilution values are presented, but a warning is given on 500i that the value(s) may be a dilution. You should review the Formulary Report to make sure all entries in a formulary are correct before installing the formulary on a 500i.
- ◆ **WARNING: Some warnings are not displayed when using Total Dose/Total Volume.** For example, set a drug in the formulary to use TD/TV and Dilution Not Allowed. Then add some TD/TV values where the equivalent concentration (e.g., 1.0 mg/mL) is equivalent to the original concentration (e.g., 1.0 mg/mL). After saving those values, change the Dilution Status to Dilution Required. You will not receive a warning on the AT that The Dilution Status of this drug is Dilution Required. The following entries have concentrations that may not be dilutions of the original drug. You should review the Formulary Report to make sure all entries in the formulary are correct before installing a formulary on a 500i.
- ◆ **WARNING: Group editing does not display warnings about using custom templates.** The warning is WARNING: Using custom defined labels will deviate from ISO and ASTM standards governing user applied labels. End-users must take responsibility for confirming legibility and usability of the resultant labels. When performing a single drug edit using a custom template, the warning is provided.
- ◆ **Using medium and large font sizes in Windows 7 distorts AT startup dialogs.** Parts of the dialog boxes will be cut off. You should use the small font sizes when using Windows 7.

- ◆ **The migration tool does not transfer custom audio files for drug names.** The drug's audio is set to no drug audio selected.wav. The migration conflict report will identify those drugs in which this occurred. You will need to reload the custom audio files in the AT and then set each drug to the proper custom audio file.
- ◆ **The migration tool does not transfer custom drug classification templates.** The custom drug classification templates are erased and drugs in the formulary will have the drug template changed to None. You will need to recreate the custom templates and then edit those drugs with None.
- ◆ **Selecting Enter after filling in the Package Profile name clears a package build and returns the user to the main formulary page.** In addition, selecting Enter on the keyboard or selecting Refresh at the top of the AT will cause the Install Software and Install Package buttons on the AT Device Manager to be grayed out. To correct the issue, log out of the AT and log back into the AT.
- ◆ **The AT Device Manager system information window does not refresh while open.** In order to have the information screen update, close and reopen the window.
- ◆ **Saving and downloading a report will default to the location from previous versions of the AT.** When running a Formulary Report the first time in a new version of the AT software and clicking Download to save the file to disk, the AT will open the previous folder where reports were saved. You should clearly locate and name your reports for easy identification.
- ◆ **The Maximum Invalid Login Attempts setting in the configuration manager has no effect when logging into 500i.**
- ◆ **The maximum length of a drug name in the custom BLANK labels is 10 characters.** A drug name such as Propofol will fit on a label, but a drug name such as Epinephrine will be truncated as Epinephrin.
- ◆ **If a package transfer fails (e.g., Wi-Fi connection disconnects or Ethernet cable becomes unplugged during transfer), the AT Device Manager that sent the package will indicate Failed while any other AT Device Managers that are opened will indicate Transferring.** You can resend the same named package from the same AT Device Manager which originally sent the package only if it is the same AT session running. If you have logged out of the AT that sent the package, refreshed the AT Device Manager, or opened the Device List again, you will need to cycle the power on 500i to transfer a package.
- ◆ **The AT will stop working if the AT Device Manager is left open for a greater than six hours when using Windows 7 with Internet Explorer 9 (IE9).** Using IE8 with Windows 7 is recommended.
- ◆ **If the AT is used on a PC with Internet Explorer 7 (IE7), the AT may exhibit slow performance if the AT is left open for multiple hours.** To correct the issue, close the AT application and restart it. No data should be lost because the AT updates as data is entered. For better performance results, install IE8 on the PC.
- ◆ **When using IE8, leaving the AT open and idle with the Pre-Import Results window displayed for more than 15 hours can cause the AT to lock up.** Leaving the AT open and idle for more than 15 hours in this case can lead to a blank Import Results window. The only way to exit is to click Discard and Confirm the discard.
- ◆ **Both the post-import user interface notification and the report shows the incorrect Total # of drugs with no changes that were skipped.** The number reported is actually the number of import operations being skipped. To confirm what was actually imported, you should look at the post-import report which shows exactly what was imported.
- ◆ **Importing 万単位 (i.e., man-tani) in the default (en-US) locale and then changing to the Japanese (ja-JP) locale causes the units to remain custom units.** There will be two man-tani units, the new one that is added by default and the custom unit, that show up in the drop down. To prevent this from occurring, a user should first change to the Japanese locale and then import.
- ◆ **Searching for either the value (e.g., 0.2) or the units (mg/mL) of the concentration works as expected, but searching for both in the Formulary Manager does not return any results.**
- ◆ **Searching for % or PE or Unspecified will return all drugs in the MDD or formulary.** You should select a different identifier (e.g., drug name) to search.
- ◆ **Searching for the string 万単位 (i.e., man-tani) does not return any values, but a subset of man-tani (i.e., 万単) does search correctly.** You can also select a different identifier (e.g., drug name) to search.
- ◆ **Not all MDD fields are searchable.** Searching in the MDD on drug name (e.g., Propofol), Master IDs, Container IDs, concentration values, or tallman works as expected, but searching on status (e.g., Active), verification (e.g., Verified) and route (e.g., Intravenous) terms does not return any results.
- ◆ **Not all formulary fields are searchable.** Searching in the formulary on Master ID, Container ID, drug names (e.g., Propofol), concentration values, tallman, template name, warnings, dilutions, audio or audio2 values works as expected, but searching on dilutions (e.g., Other), expire time (e.g., hours), route (e.g., Intravenous), verification level (e.g., Verified), dilution status (e.g., Allowed), and status (e.g., Active) values does not return any results. You should select a different search parameter or sort the column first to find the information.

- ◆ **As dilutions are created in the Edit Formulary Drug user interface, they are saved to the group of available dilutions for all drugs.** All dilutions (e.g., 5 mg/mL, 1 mcg/mL, 1000 units) created in the Edit Formulary Drug in the SLS formulary remain as options to be selected for the next drug edited. You should scroll through the existing dilution options and check an existing box before creating new dilution entries.
- ◆ **Saving and downloading a report will default to the location from previous versions of the AT.** When running a Formulary Report the first time in a new version of the AT software and clicking Download to save the file to disk, the AT will open the previous folder where reports were saved. You should clearly locate and name your reports for easy identification.
- ◆ **Deleting a drug from MDD and then undoing the deletion clears TD/TV values to defaults in the formulary.** For example, if a drug is configured with TD/TV settings in the formulary, then the drug is deleted from the MDD, and then the undo button is selected, the drug is added back to the MDD and the formulary. However, the formulary will be set to the defaults (i.e., Dilution Status: Not Allowed, Preparation Method: Normal Dilutions, Dilutions: none, Total Dose /Total Volume: none).
- ◆ **Rarely, the AT does not recognize that TD/TVs are entered.** A warning message will show indicating that TD/TV need to be entered. If this occurs, close and then restart the AT.
- ◆ **The edit drug window does not provide a warning if there are no TD/TV values entered when Dilution Status is set to Not Allowed.** You will be notified when trying to create a formulary package during formulary validation and the package will not be able to be created.
- ◆ **The EAN-13 symbology is hidden from US NDC custom preset default view of the Configure Barcode Parsing window.** If you slide the grid line to the right, EAN-13 will appear.
- ◆ **If the computer that the AT is running on has its Windows temporary folder fill up, the AT will not start.** An error will occur when starting the AT. You should contact your system administrator, and have them open the temp folder and determine which, if any, files can be deleted.
- ◆ **Test Print Every in the Configuration tab cannot be set to zero (i.e. 0).** If you want to disable Test Prints, then uncheck Enable Test Prints in the Configuration tab, create a configuration package and deploy it to 500i's that require no test prints.

Known Uncommon Issues

This section details uncommon issues with 1.4.0 SLS AT software that are unlikely to be experienced by most users.

- ◆ **WARNING: Drug Dilution Status of Not Allowed allows dilutions (e.g., 5 mg/mL, 1 mg/mL) to be defined.** However, when trying to create a formulary package on the AT, the package will not be created and an error message will be displayed.
- ◆ **WARNING: Drug Dilution Status of Not Allowed allows dilutions of only Other to be used in creating a formulary package.** However, when the formulary is installed on 500i, a dilution will not be allowed to occur for that drug when scanned.
- ◆ **WARNING: If a drug record is modified in the MDD after it has been added to the formulary, the AT does not automatically update the audio file association.** If the drug name is changed in the MDD, the associated audio file will not change, resulting in a possible incorrect association. As a work around, you can either remove and then add the drug to the formulary to trigger a new audio file association, or manually select the correct audio file from the formulary edit dialog box.
- ◆ **WARNING: A concentration length of greater than 15 characters is converted to an incorrect value in the MDD when imported.** For example, a number such as 12345678901234567890 is converted to 92,233,720,368,547.77.
- ◆ **Entering a Master ID without any zero is accepted in the MDD.** When the database mode is US NDC, an 11-digit Master ID without any zero is accepted, but cannot be mapped to a scanned 10-digit Container ID on 500i (or the AT). Thus, you can define an invalid drug that will never be used and still successfully generate a formulary.
- ◆ **A valid Formulary Report will not be created if you don't select Open, Save or Cancel within 3 minutes after selecting Download.** If a corrupt Excel file is generated (indicated by an Excel error message) then create a new Formulary Report in a timely manner.
- ◆ **The AT may experience errors or stop functioning if you perform consecutive imports without restarting the AT.** If a file or filter is between 10,000 and 50,000 entries, you need to restart the AT before importing the file or filter the second time. Contact Codonics Technical Support if there are questions.
- ◆ **The ALL and ORAL filters are not available in the AT.** Due to issues with large imports, these filters are now disabled.
- ◆ **The AT doesn't support consecutive imports of large files (i.e. > 50,000 entries) even when restarting the AT.** If you try consecutive imports of files or filters > 50,000 entries (i.e., Lexicomp ORAL or ALL filter), the AT will not work the second time you try to import a file even if you restart the AT. It will display an error. Do not use these filters or import a file this large. Contact Codonics Technical Support if there are questions.

- ◆ **An invalid barcode scan in Learn Mode does not provide information.** Occasionally, when an invalid barcode is scanned (e.g. one without an AIM code) in Learn mode, the window is simply dismissed, and the focus is on the main screen again. There is no indication that the barcode is invalid or that the scanner needs to be configured properly.
- ◆ **Undo re-sorts MDD and Formulary entries when the drugs are filtered or sorted on drug name.** For example, filtering on a list of fentanyl, deleting one of the entries, then undoing it does not place the drug in the same location in the list as it was prior to being deleted.
- ◆ **In Japanese, group editing drugs in the Formulary Manager has some fields in English.** After selecting multiple drugs, the fields that are different will show on the label template as "{CONCENTRATION}" and "{NAME}" instead of a translated version of these fields.
- ◆ **Deleting drugs one at a time can cause an error contacting server message.** This occurs with large (35K+) MDDs and a message Confirm: Delete this drug from the Master Drug Database "undefined (undefined)" is also present. If you want to delete multiple drugs from the MDD, select all the drugs and then group delete them.
- ◆ **Group editing large numbers (e.g., 35K+) of drugs at once causes Error Contacting Server error.** Clear the error by clicking the X and then select a smaller number of drugs to group edit.
- ◆ **Unable to create a formulary package of 50K drugs.** A formulary package of 35K is supported.
- ◆ **Unable to edit drugs in a formulary if there are > 100K drugs in a formulary.** If you try to edit a drug, an Error Contacting Server message appears.
- ◆ **Unable to create a Formulary Report in a formulary if there are > 64K drugs in formulary.** Excel does not support greater than 65,536 entries. The Formulary Report creation status bar will complete. However, the download button will be grayed out and a message Writing report data will appear in red in the Formulary Report creation dialog.
- ◆ **Not all drugs appear selected even though you selected a large group of drug entries and then scrolled through them.** After a large number of drugs in the AT are checked and highlighted, sometimes drugs load in a manner where every other drug is highlighted and a group of contiguous drugs is not checked if you scroll through the list. Scrolling up or down so that the list loads again resolves the issue.
- ◆ **Custom labels in the BLANK tab of the configuration manager can be deleted.** Deleting any of the default Custom labels is not recommended. If you accidentally delete all the Custom Blank Labels, contact Codonics Technical Support.
- ◆ **After shift clicking large amounts of drug entries (e.g., 25,000) in the MDD, when scrolling through the list some may look like they are unchecked.** If you select the first drug in the MDD and then scroll down and shift click at the bottom, selecting in total 25,000 drugs, when scrolling up through the list you may find some that appear not to be selected. Although it appears that they are not selected, if you chose to Add to Formulary all of them (e.g., 25,000), all of them would then be added to the formulary.
- ◆ **Search for Other will not find drugs with Other as a valid dilution.** You should select a different search parameter in this case or sort the dilutions column and scroll to find Other.
- ◆ **An error message can be caused by moving a custom label from one section (e.g., Lines) to another section (e.g., IV).** Close the error by selecting the X in the banner and then retry.
- ◆ **Custom labels in the BLANK tab of the configuration manager can be deleted.** Deleting any of the default Custom labels is not recommended. If you accidentally delete all the Custom Blank Labels, contact Codonics Technical Support.
- ◆ **The AT will not accept .csv files if the specified path contains an extension that is capitalized (e.g., CSV). If this occurs, rename the file with the extension in lower case (e.g., .csv).**

Technical Support

If problems occur during software installation or operation, contact Codonics Technical Support at any time.

Phone: +1.440.243.1198

Email: support@codonics.com

Website: www.codonics.com

Get it all with just one call
800.444.1198

All registered and unregistered trademarks are the property of their respective owners. Specifications subject to change without notice. Patents pending.
Copyright © 2010-2012 Codonics, Inc. Printed in the U.S.A. Part No. 901-245-006.03



17991 Englewood Drive
Cleveland, OH 44130 USA
+1.440.243.1198
+1.440.243.1334 Fax
Email info@codonics.com
www.codonics.com

Codonics Limited KK
New Shibaura Bldg. F1
1-3-11, Shibaura
Minato-ku, Tokyo, 105-0023 JAPAN
Phone: 81-3-5730-2297
Fax: 81-3-5730-2295