

Codonics Safe Label System Administration Tool Software

Release Notes

Version 1.2.1 Safe Label System Administration Tool Release Notes

Summary

Version 1.2.1 software is a software release for the Codonics Safe Label System™ SLS 500i Administration Tool (AT). The software is compatible with SLS 500i systems installed with SLS 1.2.1 software.

This document provides information about new features, product improvements and defects corrected in 1.2.1 SLS AT software. The SLS AT User's Manual provides further information about the AT.

New Features

- ◆ **The AT supports manual insertion and importing of combination drugs (e.g., Bupivacaine - Epinephrine).** Refer to Codonics SLS 500i Combination Drugs Technical Brief (901-247-001) for complete instructions.
- ◆ **The AT supports adding drug classification templates with custom colors and text colors.** Refer to Codonics SLS500i Drug Classification Templates - Custom Colors Technical Brief (901-248-001) for complete instructions.
- ◆ **The AT supports scanning for Learning and Verification drug containers represented with Code 128 and GS1-128 symbology barcodes.**
- ◆ **The AT supports Undo of specific actions.** Undo of import into the MDD, Undo for group move from MDD to formulary, Undo a delete (individual or group) in MDD and formulary, and Undo for individual move from MDD to formulary are supported. Once a user logs out of the AT, you cannot log back into the AT and Undo the last action.
- ◆ **The AT will allow different concentration units for dilutions than the original concentration unit.** For example, you can add a drug to the MDD with a concentration unit of mg/mL. You can then add the drug to the formulary and add dilution concentration units with mcg/mL.
- ◆ **When set to a locale other than United States or European, the AT now provides a comma for thousands separators for concentration values 1,000 and greater.** Refer to SLS Localization Reference Guide 900-538-002 for the list of common languages-locale codes.
- ◆ **When set to the United States locale, the AT now provides a comma for thousands separators for concentration values 1,000 and greater.** When the AT is set to en-US locale, all representation of numbers 1,000 and greater in the AT (i.e., pre and post-import notifications and reports, MDD drop down lists, formulary dilution concentrations, formulary reports, Formulary Drug List, and Editing Drug Label preview) will display the commas. The AT will also add a comma when importing concentration values 1,000 and greater that are not included in the drop down box of the MDD. For example, when importing 5500, it will appear in the concentration drop down as 5,500.
- ◆ **When set to a European locale, the AT provides a comma to represent a decimal and a period or a space to represent the thousands separator.** When the AT is set to a European locale (e.g., es-ES-1), all representation of numbers in the AT (i.e., post-import notifications and reports, MDD drop down lists, formulary dilution concentrations, formulary reports, Formulary Drug List, and Editing Drug Label preview) will use a comma to represent a decimal (e.g., 0,5 mg/mL). Depending on the European locale, a period or a space will be used to represent the thousands separator (e.g., 1.000 mg/mL or 1 000 mg/mL).

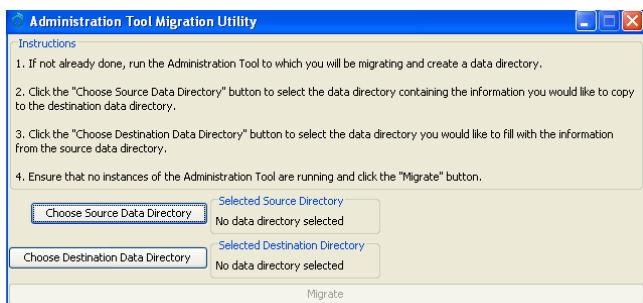
WARNING: In a European locale, for numbers 1000 and greater, the pre-import notification/report shows the incorrect number. For example, Heparin 1000 units will be displayed in the pre-import notification/report as Heparin 1 unit. The data will be imported into the MDD correctly (i.e., 1 000 units). If you choose not to import when you see the incorrect number, you can always add the drug manually to the MDD and select the unit(s) from the drop down.

- ◆ **A migration utility is provided to migrate formularies created with 1.2.0 to 1.2.1 software.** It is found in the tools directory of the AT. To use the migration utility:

WARNING: Before migrating data, make sure to document settings that will not be migrated. These are identified in the following important notes.

1. Double click on the MigrationUtility.exe

2. The AT Migration Utility screen opens.



3. Follow the instructions on the AT Migration Utility screen.

IMPORTANT:

- ◆ Any fields in a 1.2.1 database that did not exist in a 1.2.0 database will be left blank. For example, the second name field and the second concentration field of a combination drug will be left blank after migrating. A user will need to update these fields.
- ◆ If a 1.2.0 drug is assigned a WAV file that does not exist in the 1.2.1 version of the AT, the migration will complete normally. In the Formulary Edit Dialog, the WAV file drop down will default to No Audio (Silence). A user will need to either select a different name for the WAV file or select a custom WAV file.
- ◆ Any drugs from the 1.2.0 database that use the Narcotics/Tranquilizer Combinations or Dual Blank White Label templates and are migrated to combination drugs in 1.2.1, will have their label template automatically set to None. A user needs to assign the correct template before a formulary package can be created.
- ◆ In the case of a 1.2.0 to 1.2.1 migration when the 1.2.0 database contains drugs with Narcotics/Tranquilizer Combinations or Dual Blank White Label templates, or drugs having audio files that are no longer included in the 1.2.1 AT, a migration report is created listing those drugs. The report is written to the same directory in which the Migration Utility executable is located.
- ◆ Each issue in the migration report will contain the Master ID, Container ID, Name and Concentration of the drug. Also, each issue will contain a message informing the user that either the label template was changed to None or that the audio file for that drug is missing in 1.2.1.
- ◆ The data pertaining to locale settings are not migrated. Database mode (US NDC vs. Other) is not migrated. After migrating a formulary in the Other mode, users will have to set the database mode to Other again. Barcode settings in the local settings are not migrated. After migrating, any barcode settings will have to be reconfigured.

IMPORTANT continued:

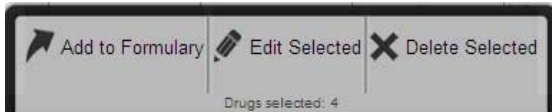
- ◆ The data pertaining to configuration settings are not migrated. Custom Label configurations are not migrated. The default settings in 1.2.1 will be used. The user will need to reconfigure them in 1.2.1.
- ◆ Version numbers of formulary packages are not migrated. For example, a formulary package with a version number of 3, after migrating and being re-packaged, will start with a version number of 1 again.
- ◆ Any drugs from the 1.2.0 database that have their template set to "None" will remain "None" when migrated to 1.2.1.
- ◆ The verification state of drugs is maintained and not changed as part of the migration process.
- ◆ Backwards migrations (i.e., 1.2.1 to 1.2.0) are not supported.

Product Improvements

- ◆ The AT supports importing up to five decimal places and truncates/does not round if there are more than five decimal places (e.g., .000056 g/mL in the CSV -> .00005 in the MDD).
- ◆ The AT and SLS support new concentration values. All integers from 1 to 100 are now available along with 0.33, 1.6, 1.8, 3.2, 62.5, 160, 330, 375, and 440.
- ◆ Importing performance, formulary report creation and formulary package creation are faster.
- ◆ For a drug that is set to a non-combination drug in the formulary, a user is alerted if they change it to a combination drug in the MDD. The warning says - Warning, the drug classification template for this drug has not changed in the Formulary. Review the drug's template in the Formulary and select a different template if needed.
- ◆ Default custom label settings. The AT is shipped with the following default expiration time values:
 - ◆ Blank labels: 24 hours except yellow and white labels which are set to 0 hours
 - ◆ Blank label with editable drug name: 6 hours
 - ◆ Lines labels: 0 hours
 - ◆ IV labels: 48 hours

IMPORTANT: The default settings provided by the Administration Tool and Safe Label System are provided for your convenience. The settings are not industry standards or Codonics recommended settings but are commonly used in practice. You can change any or all of them through the Administration Tool and apply the changes to the SLS.

- ◆ Group Edits indicate how many drugs are selected when adding or deleting.

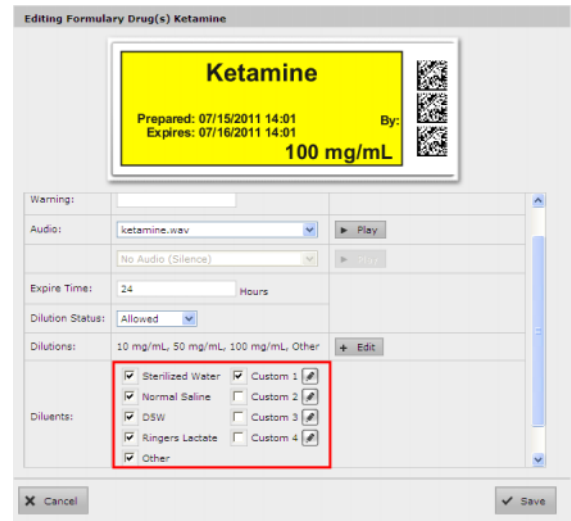


- ◆ The Custom (Blank) Label tab now includes a template (i.e., custom-label-template) where a user can edit the drug name and color. By default, the template is set to Propofol and yellow.



- ◆ A warning notification is now provided in the Edit Formulary Drug Label preview if the drug name or warning is too long and may exceed the printable field on the label. In the case where the name used is too long (e.g., Magnesium hydroxide), ellipses (e.g., Magnesium hydro...) are used and a warning notification is provided.
- ◆ The AT and SLS support additional spoken drug names. The new spoken drug names included are sulbactam, diamorphine, hetastarch, xylocaine, sterile water, ringers lactate, normal saline, duramorph, atricurium, tranexamic acid, protamine, famotadine, bupivacaine-dextrose, glucagon, carboprost, indigo carmine, ropivacaine and isoproterenol.
- ◆ There is now a No Audio (Silence) WAV file option that is silent and is the default when a drug is entered that does not have a matching WAV file.

- ◆ There is a No Drug Audio Selected WAV file option which announces No Drug Audio Selected on an SLS.
- ◆ When adding drug(s) from the MDD to the formulary, the default template for all drugs is the Miscellaneous White Label template.
- ◆ The AT provides the ability to configure and add diluents. By default, there are 5 selected diluents (Sterilized Water, Normal Saline, D5W, Ringers Lactate, Other). A user can uncheck any/all of them when a drug allows or requires a dilution. In addition, up to 4 custom diluents can be added to a formulary. This is done by editing the specific custom diluent in the formulary edit screen.



IMPORTANT: Editing the name of a custom diluent is a global change in the formulary, hence, changing the specific custom diluent name for one drug changes the specific custom diluent name for all drugs in the formulary. For example, naming the Custom 1 diluent to Lidocaine 1% in Ketamine above sets the custom diluent field to Lidocaine 1% for all drugs in the formulary that use Custom 1 diluent. If the Custom 1 field was checked for another drug, it will remain checked but the diluent name will be changed.

- ◆ A user can change the number of Custom Label copies that will be printed.

Defects Corrected

- ◆ Importing using a Route Filter of ALL, which used to take over an hour when using the Lexicomp™ database, is now reduced. A user should still select a Route Filter such as injectable or oral and injectable to improve import performance.
- ◆ The drug name and concentration are now visible when selecting a drug to edit in the formulary.
- ◆ The version number in the formulary report and in formulary packages are now synchronized. A single version number for a formulary and formulary report is now used.
- ◆ If there is a comma in the MDD or SLS formulary concentration field (e.g., 5,000), the concentration value is now spoken if a WAV file is available.
- ◆ The Drug Classification Templates are now alphabetized in the AT in both the Edit Formulary Drug Template drop down and the Drug Classification Templates. Custom templates, however, are added to the bottom of the Edit Formulary Drug Template drop down.
- ◆ In using a CSV file to import, the Route Filter (e.g., intravenous) and Status (e.g., ACTIVE or OBSOLETE) are now supported. These are the eighth and ninth columns in the CSV. Refer to Combination Drug Technical Brief 901-247-001 for CSV definition.
- ◆ The formulary report now has a column for Warning in the summary.
- ◆ Learn Drugs in MDD using an 11-digit Master ID is now supported.

- ◆ The Miscellaneous field is now included when creating a formulary report.
- ◆ The message Delete these drugs? in the formulary was updated to be more informative. When multiple drugs are selected for deletion, the new message is: Confirm: Delete these drugs from the SLS Formulary? (Drugs will not be deleted from the Master Drug Database.) For a single drug it says: Confirm: Delete this drug from the SLS Formulary "Drug Name (e.g., Propofol) Concentration (e.g., 10 mg/mL)"? (Drug will not be deleted from the Master Drug Database).
- ◆ Moved More results exist... warning to top of the Import Results dialog and to the top of the Validation Errors dialog so it was not buried at the bottom of the notification.
- ◆ Moved the Concentration field to the immediate right of the Drug Name field in the Formulary Drug List. This allows a user to quickly see the drug and its concentration and know which drugs have the same name and concentration.
- ◆ The AT reports' (pre-import, post-import, formulary report) filenames now include the date in the timestamp.
- ◆ There is a Test Print on Every Login configurable setting in the Configuration Manager. This now allows the user to set the time span, in hours, between Test Prints at login to the SLS. It also enables the Test Print on First Login to work correctly.

- ◆ Adding a drug that maps to a verified drug already in the MDD will now unverify the verified drug.
- ◆ An error message is now displayed when attempting to run multiple instances of the AT.
- ◆ Error messages on the AT no longer disappear after 6-7 seconds. The error can be cleared by clicking on the X.
- ◆ When importing a CSV or Lexicomp file, pressing Enter when the Import field is highlighted will now start the import process.

- ◆ Editing a template using the checkbox to the left of the drug entry and clicking **Edit Drug** in the pop-up panel no longer references the initial drug template state after subsequent edits.
- ◆ Drugs with leading and trailing spaces in the names can now be added to the formulary and will correctly match an audio file matched with the drug name.
- ◆ Corrected a translation issue which caused the **AT Master Drug Count to be missing**. The Master Drug Count was being pushed out of the visible part of the field in the French translation because the field was designed for a shorter phrase.
- ◆ The AT configuration and formulary export progress messages (e.g., **Setting, Label Section** etc.) are now translatable.
- ◆ The AT Drug Classification names (e.g., **Induction agent, Tranquilizer**) are now translatable.
- ◆ The AT License Agreement in the formulary package is now translatable.
- ◆ Switching quickly between the **Formulary to Configuration** tabs no longer highlights one (e.g., **Formulary** tab) and displays the other (e.g., **Configuration** tab).
- ◆ The AT miscellaneous label fields (e.g., **Name, ID, Expiration Date**) are now translatable.
- ◆ AT template warning messages (e.g., **WARNING: the label preview...**) are now translatable.
- ◆ Sorting by concentration in the formulary when the search filter is used is working correctly. Previously, a sort would look like:
 - 1 g
 - 10 g
 - 2 g
 - 1 g <- out of place
- ◆ The AT now allows a formulary package to be created, when selecting **Required for Dilution Status** in the formulary manager and then only selecting **Other** as a diluent.
- ◆ An entry is now included in a formulary report **Formulary Changes** worksheet when a drug is deleted from the MDD.
- ◆ Creating a formulary package with more than 11,500 drug entries is now possible. The AT can create formulary packages that contain up to 65,000 drug entries.

Known Common Issues

This section details common issues with 1.2.1 SLS AT software that are likely to be experienced by most users.

- ◆ **WARNING: The Maximum Invalid Login Attempts setting in the configuration manager has no effect when logging into the SLS.**
- ◆ **WARNING: Replacing drug names with non-Latin characters (e.g., Kanji, Hebrew) causes duplicate drug entries in the MDD.** When the MDD screen is sorted by drug name, changing a drug name to start with a non-Latin character causes the drug to show up twice in the MDD. When the issue occurs, editing either duplicate drug entry on the MDD changes the other entry properly. Re-sorting the MDD list or refreshing the MDD by switching to another page in the AT and then back causes the drug name to only show up once in the list, sorted after the names that start with Latin characters. If the drug is already in the SLS formulary, then the drug name will show up with the changed characters in the formulary and will be listed only once.
- ◆ **WARNING: Selecting Overwrite Matches when importing with key field set to Master ID (MID), does not overwrite an existing matching drug in the MDD if the existing entry only has a Container ID (CID) and no MID.** In this case, a new drug entry will be added to the MDD. For example, if a user has imported a drug with a CID of 0123456789 but no MID, and then later updates the import file with an MID of 00123456789 for the same drug entry, imports, selects **Overwrite Matches**, the original drug entry in the MDD is not overwritten. Instead, a new entry is entered into the MDD. The issue is that there are now two drug entries in the MDD with matching CIDs but they can have different statuses (e.g., **OBSOLETE** and **ACTIVE**). A user should use the same key field (MID or CID) each time when importing which will overwrite existing matching drugs in the MDD instead of adding a new entry. If a user switches from a CSV (using CID as the import key field) to Lexicomp (using MID as the import key field), a user should create and review the formulary report and **Safety** tab upon promoting the formulary.

IMPORTANT: In the **Safety** report, if there are duplicates, potential duplicates, or mappings (e.g., 10 to 11) identified where the drug name and concentration are the same, make sure to check the status (i.e., **ACTIVE**, **OBSOLETE**) of both/all drugs. You should merge the information of the drug entries together in the MDD to the most current information and delete the extra entry, and review the drug entry information in the formulary.

- ◆ **WARNING: Post import results dialog does not list all import errors.** If a CSV file has one or more drugs with no Drug Name, then the AT will not import those specific drugs and not provide information in the post import report.

- ◆ **WARNING: The pre-import report does not display differences between matching drugs.** The pre-import report does detect drug matches, but does not display any differences between the two drug entries.
- ◆ **WARNING: A valid formulary report will not be created if you don't select Open, Save or Cancel within 3 minutes after selecting Download.** If an invalid report is generated, then create a new formulary report in a timely manner.
- ◆ **WARNING: The formulary report does not sort duplicates.** Duplicate Container IDs in the formulary are reported, but are displayed in a way that may not put the duplicates one right next to another. You can sort the Excel spreadsheet on Container ID.
- ◆ **WARNING: The Formulary Changes worksheet in the formulary report can function incorrectly.** For example, if you demote a formulary, edit an existing drug in the formulary, and then delete the drug entry in the formulary it will be deleted from the formulary report, when promoted, but it will not show up in the Formulary Changes worksheet. For example, if you demote a formulary, add a drug to the MDD, add it to the formulary, then edit the drug, then promote the formulary and create a report, the changes report will only show the drug was edited, but not added. The drug entry will still be shown in the formulary report.
- ◆ **WARNING: The AT can function incorrectly when selecting a large list of drugs (i.e., > 4,500) with shift click.** You may receive an Error Contacting Server message which when cleared by selecting the X will lead to further incorrect behavior. The Edit/Delete popup tab remains displayed with drugs selected 0 and if you select Delete and confirm, it will then delete the entire MDD. If this occurs, you can Undo to retrieve the entire MDD. To restore correct functionality, exit the AT and log in again and select less than 4,500 entries at one time.
- ◆ **WARNING: The Undo function can still appear active when it is actually not enabled.** For example, when Undo is enabled and a user edits a drug, the Undo does not become grayed out, so it appears that it is still able to be undone even though it cannot. Another example, is if the Undo button is enabled prior to verifying a drug or removing its verification, the undo button will remain enabled afterward, but have no effect when clicked. Changing from the MDD to the formulary or vice versa will clear the issue.
- ◆ **WARNING: Shift click and drug count are non-functional when not selecting enter during a search entry.** For example, in the MDD, type in propo in the search filter, but do not press enter. Then click a drug that starts with propo. The counter will increase by one. Scroll to the bottom of the page and shift-click a drug. All the drugs in between will not get selected, but the count will increase to something greater than 2, yet only one more drug will be checked. Clearing the search field by clicking the X refreshes and dismisses this problem. By selecting enter after searching prevents the problem.
- ◆ **WARNING: For a drug in the formulary, changing it from a combination drug to a non-combination drug or vice versa will set the drug label template to none.** A user will be required to select a label template for the drug in the formulary before creating a formulary package. If the drug is set to a combination drug in the MDD, only combination drug label templates will be able to be selected. If the drug is set to a non-combination drug in the MDD, only non-combination drug label templates will be able to be selected.
- ◆ **WARNING: An individual edit followed by group edit in the MDD when changing a combination drug to a non-combination drug or vice versa will cause the message WARNING: The drug classification template for this drug has changed Review the drug in the Formulary and select the appropriate template to not be displayed.** A user is still required to select a label template for any drug changed in the formulary before creating a formulary package.
- ◆ **WARNING: The AT may experience errors or stop functioning if you perform consecutive imports without restarting the AT.** If a file or filter is between 10,000 and 50,000 entries, you need to restart the AT before importing the file or filter the second time. Contact Codonics Technical Support if there are questions.
- ◆ **WARNING: The AT doesn't support consecutive imports of large files (i.e. > 50,000 entries) even when restarting the AT.** If you try consecutive imports of files or filters > 50,000 entries (i.e., Lexicomp ORAL or ALL filter), the AT will not work the second time you try to import a file even if you restart the AT. It will display an error. **Do not use these filters or import a file this large.** Contact Codonics Technical Support if there are questions.
- ◆ **WARNING: Shift clicking in the formulary can select more drugs than appears on the page displayed.** If you immediately navigate to the formulary page and shift click two drugs, the AT may also select other drugs elsewhere in the formulary. To prevent the issue, you should first sort by a column, other than Tallman, in the formulary or do a search and then shift click.

- ◆ **The AT accepts passwords longer than 15 characters. It is recommended to set your password between six and 15 characters.**
- ◆ **AT passwords must be longer than 6 characters.** If the password is shorter than 6 characters, a pop-up message, Error editing user information, will occur and the password field will not be highlighted.
- ◆ **When creating a CSV file using a text file (e.g., Notepad), do not tab from field to field as it will behave the same as adding spaces in the field.** Importing tabs in concentration fields will give dilution errors when setting their dilutions. You should use commas to separate the fields. This is not an issue when using Excel.
- ◆ **When selecting CSV files, the file browser does not restrict shown files to CSV.** Currently it shows all files, including picture files and HTML files.
- ◆ **There is a potential for two different drugs to have the same Container ID (e.g., 10-digit NDC).** A user should sort their Master Drug Database (MDD) by Container ID and determine if there are duplicates:
 - ◆ If the duplicates are the same drug, delete one of the entries.
 - ◆ If the duplicates are different drugs, determine if both drugs will ever be used in the operating room:
 - ◆ If they will both be used, add both drug entries to the SLS formulary.
 - ◆ If either of the drugs will not be used, the drug that will not be used can be deleted from the SLS formulary.
- ◆ **Importing a CSV file in Other mode with no Master ID column will cause an error when importing.** Other mode only uses a Container ID and does not use a Master ID. To correctly import, the CSV requires the first column to be a blank column for the Master ID and the second column should be the Container ID.
- ◆ **Lexicomp database import allows Container ID as the key field, but always errors out.** A user should select Master ID as the key field when importing using a Lexicomp database.
- ◆ **Completing a group edit takes a user back to the top of the SLS formulary instead of remaining in the location where the editing occurs.**
- ◆ **Direct import of a First DataBank (FDB) database is not supported.** A user will need to convert their FDB database to a CSV file and then import. Contact your System Administrator to convert a FDB database to a CSV file.
- ◆ **The value of the concentration cannot exceed five digits (e.g., 99999).** The MDD Edit Master Drug screen provides options to manage this issue. For example, Heparin 1000000 units can be set as 1 in the Concentration field and M Units in the units field. Similarly, Heparin 500000 units can be set as 500 in the Concentration field and K Units in the units field.

IMPORTANT: If the concentration digits are exceeded, then when promoted to the SLS, the syringe label barcode cannot be created and the label will not be generated.

- ◆ **The Formulary Manager does not verify proper concentration values or units when importing from a CSV file.**

WARNING: Do not delete the drug from the SLS formulary that will not be used unless you are certain that the deleted drug will never be used in the OR.

- ◆ **The Formulary Manager does not detect and will not import drugs after a blank line in a CSV file.** Make sure there are no blank lines in the CSV file. If the first line of a CSV file is blank, the AT will not import any drugs. If the blank line is somewhere in the middle of the file, the AT will detect only the drugs that come before the blank line. For example, if line 28 of a CSV file containing 100 drugs is blank, the AT will detect and import only the first 27 drugs.
- ◆ **A error message is not displayed if there are duplicate drugs in the import file.** A warning message that there is a matching Container ID is provided.
- ◆ **When the AT is set to Other Mode, pre-import and post-import reports will show a column of blank Master IDs of drugs even though Other Mode represents just Container IDs.** When set to Other Mode, the MDD and the SLS formulary drug lists do not show the Master ID of drugs; they only show Container IDs of drugs.
- ◆ **Both the post-import user interface notification and the report shows the incorrect Total # of drugs with no changes that were skipped.** The number reported is actually the number of import operations being skipped. To confirm what was actually imported, the post-import report shows exactly what was imported.

- ◆ **Formulary Manager pre-import and post-import report results show all text in red color whether it is an error, warning or non-error.** Warnings (e.g. Container ID of drug maps to an existing drug in the import file) and non-errors (e.g. Non-matching drug will be added, Drug added) visually look the same as errors.
- ◆ **Tallman lettering will remove a space between two lower case letters.** For example, if tallman lettering was entered as lidocaine epinephrine, it will be displayed as lidocaineepinephrine. To maintain a space, use an underscore (i.e., _) between lower case letters, or capitalize one of the letters (e.g., lidocaine Epinephrine).
- ◆ **Scrolling in the MDD and SLS formulary can be slow and displays the Loading dialog box.** Sorting on columns or using the search function can reduce the time to find specific drugs.
- ◆ **There may be a blank screen at the top/bottom of the page when scrolling all the way to the top/bottom of the MDD or SLS formulary.** If you reach the top/bottom and it's blank, then scroll up or down until the screen is properly displayed.
- ◆ **Setting the AIM code on a Xenon 1900 scanner and Symbol DS9808 scanner is incomplete in the AT User's Manual.** Refer to Codonics Scanner Configuration Technical Brief (901-249-001) to program a Xenon 1900/1902 and Symbol DS9808.
- ◆ **Searching for either the value (e.g., 0.2) or the units (mg/mL) of the concentration works as expected, but searching for both in the Formulary Manager does not return any results.**
- ◆ **Not all MDD fields are searchable.** Searching in the MDD on drug names (e.g., Propofol), Master IDs, Container IDs, concentration values, or tallman works as expected, but searching on status (e.g., Active), verification (e.g., Verified) and route (e.g., Intravenous) terms does not return any results.
- ◆ **Not all formulary fields are searchable.** Searching in the formulary on Master ID, Container ID, drug names (e.g., Propofol), concentration values, tallman, template name, warnings, dilutions, audio or audio2 values works as expected, but searching on expire time (hours), route (e.g., Intravenous), verification level (e.g., Verified), dilution status (e.g., Allowed), and status (e.g., Active) values does not return any results.
- ◆ **The Verification message for Drug Not Found is incorrect.** The message says Drug not found. Please look for the drug in the Master Drug Database and move to the formulary. A user should add the drug to the MDD and then verify the drug.
- ◆ **An invalid barcode scan in Learn Mode does not provide information.** When an invalid barcode is scanned (e.g. one without an AIM code) in Learn mode, the window is simply dismissed, and the focus is on the main screen again. There is no indication that the barcode is invalid or that the scanner needs to be configured properly.
- ◆ **Some barcode symbology options shown in the Configure Localization are not currently supported.** These are Interleaved 2 of 5, IFT-14, Code 39, EAN-13, Code 32, UPC-E, UPC-E1, EAN-8.
- ◆ **Dilution entries are cumulatively saved for the next drug edited.** All dilutions (e.g., 5 mg/mL, 1 mcg/mL, 1000 units) created in the Edit Formulary Drug in the SLS formulary remain as options to be selected for the next drug edited. You should scroll through the existing dilution options and check an existing box before creating new dilution entries.
- ◆ **A warning message (e.g., WARNING: This is a Paralyzing Agent) that is too long in the SLS formulary might cause the message to be truncated on a label.** The label field will be truncated and ellipses will be used to show the truncation. A user should shorten the warning message to prevent the truncation.
- ◆ **Custom Label (i.e., BLANK, LINES, IV, PATIENT) text does not make Japanese characters bold like English letters on the SLS tabs.**
- ◆ **In Japanese, group editing drugs in the Formulary Manager has some fields in English.** After selecting multiple drugs, the fields that are different will show on the label template as "{CONCENTRATION}" and "{NAME}" instead of a translated version of these fields.
- ◆ **Untranslated tabs in Excel report files.** The worksheet tab names at the bottom of the Excel report for the pre-import, post-import, and formulary are in English.
- ◆ **If you rename a Custom Label name (e.g., Blank, Lines, IV, Patient) and it is too long, it will be truncated in the center of the name when displayed on the SLS user interface.** If it is truncated on the SLS, use the AT Configuration Manager to shorten the name.
- ◆ **Unchecking a Custom Label (i.e., LINES, IV, PATIENT) in the Configuration Manager of the AT has no effect.** When creating a package, whether the box is checked or unchecked, the Custom Label will appear on the SLS user interface.
- ◆ **Clearing any of the Custom Label (i.e., LINES, IV, PATIENT) names in the Configuration Manager will change the tab name to CUSTOM when displayed on the SLS.**
- ◆ **If the AT is used on a PC with Internet Explorer 7 (IE7), the AT may exhibit slow performance if the AT is left open for multiple hours.** To correct the issue, close the AT application and restart it. No data should be lost because the AT updates as data is entered. For better performance results, install IE8 on the PC.

- ◆ **Run Time Error.** When changing from Configuration to Formulary in the AT, a user may receive A Run Time Error has occurred message and Error changing pages message. If this happens, should select No on the debug message to clear the message, then click on the appropriate tab.
- ◆ **The text on the splash screen is not translated.** When loading a new formulary package onto the SLS, the splash screens during the update process do not display translated text.

Known Uncommon Issues

This section details uncommon issues with 1.2.1 SLS AT software that are unlikely to be experienced by most users.

- ◆ **WARNING: The AT cannot import empty csv files.**
When an empty csv file is selected and the Import button is pressed, an error message appears that says Undefined.
- ◆ **WARNING: Entering a Master ID without any zeroes is accepted in the MDD.** When the database mode is US NDC, an 11-digit Master ID without any zeros is accepted, but cannot be mapped to a scanned 10-digit Container ID on the SLS (or the AT). Thus, a user can define an invalid drug that will never be used and still successfully generate a formulary.
- ◆ **WARNING: Drug Dilution Status of Not Allowed allows dilutions (e.g., 5 mg/mL, 1 mg/mL) to be defined.** However, when trying to create a formulary package on the AT, the package will not be created and an error message will be displayed.
- ◆ **WARNING: Drug Dilution Status of Not Allowed allows dilutions of Other to be used in creating a formulary package.** However, when the formulary is installed on the SLS, a dilution will not be allowed to occur for that drug when scanned.
- ◆ **WARNING: If a drug record is modified in the MDD after it has been added to the formulary, the Admin Tool does not automatically update the audio file association.** If the drug name is changed in the MDD, the associated audio file would not change, resulting in a possible incorrect association. As a workaround to this scenario, the user can either remove and then add the drug to the formulary to trigger a new audio file association, or manually select the correct audio file from the formulary edit dialog box.
- ◆ **Incorrect fields are not indicated in a password change window if a password is entered but both new password fields are left blank.**
- ◆ **Once the database mode (i.e., USA or Other) is selected and data is entered into the MDD, it is recommended that a user not change the database mode.** If a user needs to change modes, contact Codonics Technical Support.
- ◆ **When using IE8, leaving the AT open and idle for more than fifteen hours can lock-up the AT.** After the Pre-Import Results window is displayed, leaving the AT open and idle for more than fifteen hours can lead to the a blank Import Results window. The only way to exit is to click Discard and Confirm.
- ◆ **Not all drugs appear selected even though the user selected a large group of drug entries and then scrolled through them.** After a large number of drugs in the AT are checked and highlighted, sometimes drugs load in which every other drug is highlighted and a group of contiguous drugs is not checked if you scroll through the list. Scrolling up or down so that the list loads again resolves the issue.
- ◆ **If the AT abruptly shuts down while deleting a group of drugs or moving a group of drugs from the MDD to the SLS formulary, all of the entries may not be deleted or moved.** In this case, a part of the group can be deleted or moved. If the AT abruptly shuts down, a user should see what was deleted or moved, and repeat and complete the operation.
- ◆ **Shift clicking large amounts of drug entries in the MDD and trying to add them to the SLS formulary causes Error contacting server error.** The limit that can be shift clicked and added to the SLS formulary at one time are 2,000 entries.
- ◆ **Search for Other will not find drugs with Other as a valid dilution.** A user should select a different search parameter in this case or sort the dilutions column and scroll to find Other.
- ◆ **Adding a localization pack when there is an existing directory of the same name will not overwrite the existing one.** If a localization pack is chosen to be loaded and a directory (localization) already exists with the same name, the dialog "This localization pack is not valid or is corrupt. It will not be added." is shown on the user interface.
- ◆ **Pop-up dialogs when changing locale are not always visible.** The pop-up dialog confirming that you want to change the language locale of the AT will appear behind other open application windows (e.g., Windows Explorer). You should close or minimize all other open windows.
- ◆ **Some translations may cause the New Drug Entry screen to grow and cause scroll bars to appear.**
- ◆ **Some translations may cause the Barcode Settings column headers in the Configure Locale screen to wrap to a second line.**

- ◆ **Clicking through hour values in the Configuration Manager selection box is not smooth.** In the Test Print Every option of the Safety settings, clicking the arrows for number of hours can become highlighted, then stall on a value for a click, and then unhighlight.
- ◆ **Custom labels in the BLANK tab of the configuration manager can be deleted.** Deleting any of the default Custom labels is not recommended. If you accidentally delete all the Custom Blank Labels, contact Codonics Technical Support.

- ◆ **Problem if a single space is used in Custom Label.** Typing a single space in the LINES and IV name fields in the Configuration Manager will display the name CUSTOM on the SLS user interface.

Technical Support

If problems occur during software installation, contact Codonics Technical Support at any time.

Phone: +1 (440) 243-1198
Email: support@codonics.com
Website: www.codonics.com
www.safelabel.com

Get it all with just one call
1.800.444.1198

All registered and unregistered trademarks are the property of their respective owners. Specifications subject to change without notice.

Copyright © 2010–2011 Codonics, Inc. Printed in the U.S.A. Part No. 901-245-003.13



17991 Englewood Drive
Cleveland, OH 44130 USA
+1 (440) 243-1198
+1 (440) 243-1334 Fax
Email info@codonics.com
www.codonics.com

Codonics Limited KK
New Shibaura Bldg. F1
1-3-11, Shibaura
Minato-ku, Tokyo, 105-0023 JAPAN
Phone: 81-3-5730-2297
Fax: 81-3-5730-2295