

SLS Safe Label System™

Administration Tool



CODONICS

Advanced Formulary Management

Codonics Safe Label System™ is an FDA-approved, medication labeling device that provides full color labels per ASA (American Society for Anesthesiologists) and ISO guidelines, and The Joint Commission requirements. The system is comprised of two components: the Administration Tool (“AT”) and the SLS 500i™. The AT allows the Pharmacy to create and control the drug Formulary for SLS systems safely and securely, making clinical pharmacists part of the operating room team. This Windows® based software application includes modules which enable systems administrators to prepare formularies and configure the SLS 500i.

SLS Formulary Manager

Safety starts in Pharmacy with the SLS Formulary. The Master Drug Database (“MDD”), the AT’s main list of all drug records, may contain a superset of the records deployed to the Safe Label Systems. The SLS includes a one-year subscription to Lexicomp™ Basic Drug Database. To populate the MDD with drug records users can import the Lexicomp database, their own database or add drugs manually.

SLS Master Drug Database



Drug Name	Master ID	Container ID	Tallman	Concentration	Route	Verification	Status	Actions
Fentanyl		0409909431	fentaNYL	50 mcg/mL		Not Verified	ACTIVE	[Icons]
Fentanyl	01001903705		fentaNYL	50 mcg/mL		Not Verified	ACTIVE	[Icons]
Fentanyl		0409909425	fentaNYL	50 mcg/mL		Verified	ACTIVE	[Icons]
Glycopyrrolate		0517460125		0.2 mg/mL		Not Verified	ACTIVE	[Icons]
Glycopyrrolate		0517460525		0.2 mg/mL		Not Verified	ACTIVE	[Icons]
Glycopyrrolate		0517460125		0.2 mg/mL		Not Verified	ACTIVE	[Icons]
Heparin		6332326201		5,000 units/r		Not Verified	ACTIVE	[Icons]
Hydromorphone		0641012121	HYDRMorpl	2 mg/mL		Not Verified	ACTIVE	[Icons]
Iopromide		5041934405		300 mg/mL		Not Verified	ACTIVE	[Icons]
Ketamine		0409205105		100 mg/mL		Not Verified	ACTIVE	[Icons]
Ketorolac		6332316201		30 mg/mL		Not Verified	ACTIVE	[Icons]
Ketorolac		0409379549		30 mg/mL		Verified	ACTIVE	[Icons]
Labetalol		0409226720		5 mg/mL		Not Verified	ACTIVE	[Icons]

Customization:

Users select the drugs they want included in the SLS Formulary from the MDD. After selecting the drugs, users can customize them in the Formulary for use in their SLS system. The AT’s easy-to-use graphical user interface displays changes in real time as they are made by the user, including:

- Selecting from The Joint Commission’s compliant label templates based on ASA color guidelines and ISO standards
- Warnings and messages about the drug including paralyzing agent, anticoagulant, etc.
- Whether a dilution is allowed, not allowed or required, and the appropriate dilutions/diluents
- Audio file of the spoken drug name
- Time frame (in hours) until the drug will expire
- Miscellaneous field for billing codes, container size or manufacturer, etc.



SLS Formulary

(enhanced to show detail, all screen images are from software version 1.2.0)

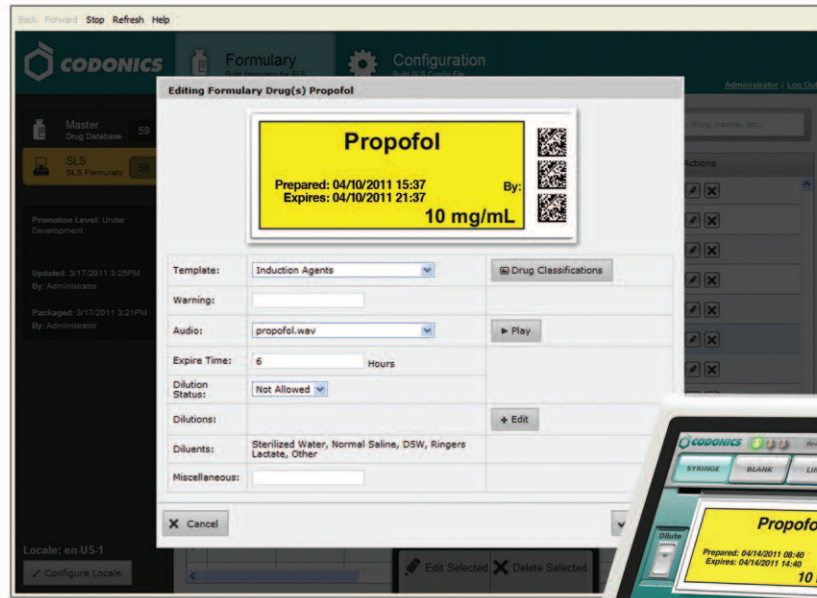
Master ID	Container ID	Name	Tallman	Template	Warning	Dilution Status	Concentration	Dilutions	Diluents
	0703450201	Metoclopramide		Blank White Label		Not Allowed	5 mg/mL		
	0781945170	Cefazolin	ceFAZolin	Blank White Label		Required	1g	100 mg/mL	Sterilized W
	1001902859	Midazolam		Tranquilizers		Not Allowed	1 mg/mL		
	1001903339	Fentanyl		Narcotics		Allowed	50 mcg/mL	25 mcg/mL, 50 mcg/mL, Other	Sterilized W
	1001903705	Fentanyl		Narcotics		Allowed	50 mcg/mL	25 mcg/mL, 50 mcg/mL, Other	Sterilized W
	1001903839	Fentanyl	fentaNYL	Narcotics		Allowed	50 mcg/mL	25 mcg/mL, 50 mcg/mL, Other	Sterilized W

Standardization:

Once the Formulary is promoted and installed on an SLS500i, each label prepared for a drug included in the Formulary will contain a 2D barcode. The barcode enables the syringe to be scanned into an Anesthesia Information Management System (AIMS) and EHR. This standardization of drug labeling immediately improves safety and may significantly decrease medication errors.



Configurable data-rich 2D barcode for AIMS and EHR integration



Safety Features:

- Secure system requiring user login and password
- Automatic revision control and Formulary locking ensure no unauthorized editing or modifications
- Barcode verification for each drug ensures data entered manually or imported from third party databases is linked to the proper drug record before the SLS 500i will print a label
- Select from predefined label designs, create customized warning messages and more
- Time frame (in hours) until the drug will expire
- Reports before and after importing drug databases

Management Features:

- Configure the Formulary to include dilutions/diluents for each drug
- Create reports for documentation, archival and management approval processes
- Promotion, a three stage process a drug Formulary must go through before being released for use, including under development, test and review, and approved

Propofol 10 mg/mL

SLS 500i scanning a drug vial and printing a label



SLS 500i label applied to syringe

Search by drug name, etc.

	Audio	Expire Time (Hours)	Route	Verification Level	Status	Miscellaneous	Actions
	metoclopramide.wav	24		Not Verified	ACTIVE		
ater, Normal Saline, D5W, Ringers	cefazolin.wav	24			ACTIVE		
	midazolam.wav	24		Verified	ACTIVE		
ater, Normal Saline, D5W, Ringers	fentanyl.wav	24		Verified	ACTIVE		
ater, Normal Saline, D5W, Ringers	fentanyl.wav	24		Not Verified	ACTIVE		

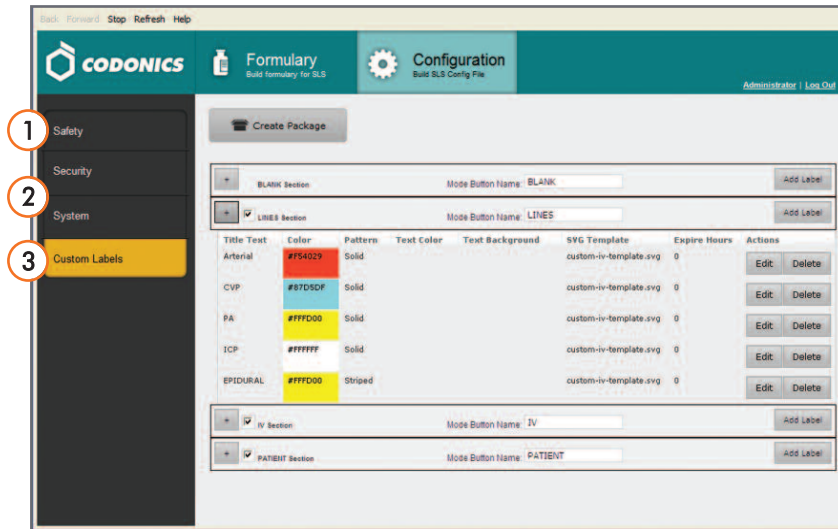
Greatly Reduce Medication Errors

Configuration Manager

The Configuration Manager contains four tabs that allow a user to set up the SLS product for safety, security, system and custom labels.

- 1 Safety Tab** allows a user to select what safety features of the SLS 500i are enabled in their hospital. This includes confirming that the container scanned was the intended medication, the accuracy of the printed label, and configuring the frequency of test prints.
- 2 Security and System Tabs** determine what data is included in the syringe label barcode as well as how the SLS 500i behaves.
- 3 Custom Labels Tab** is used for applications that do not require the scanning of a medication. These can include blank syringe labels, invasive monitor line labels, intravenous line labels, and patient ID labels for specimens and reports.

Creating a custom label using the Configuration Manager



Prints labels that comply with the 2011 Joint Commission NPSG.03.04.01*, and meet the intent of ISO 26825, ASTM 4774 Standards and ASA Guidelines

*Prints diluent and dilution if required

AT Minimum System Requirements:

Hardware: Dual Core Processor
2 GB RAM
CD ROM Drive
Available USB port
Printer (optional)



Sponsoring Donor



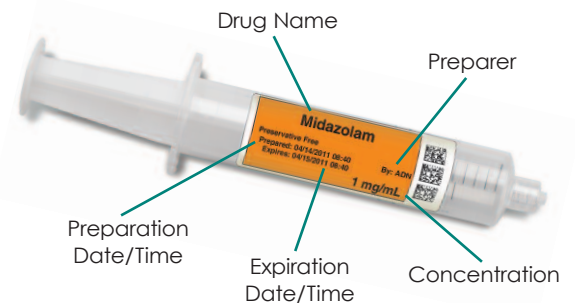
Corporate Member

O/S: Windows® XP or newer

Software: Java™ 6.24 or newer
Internet Explorer® 8 or newer
Excel® or compatible program is required to open reports

Barcode Scanner: 1D or 2D hand held or fixed scanner, dependent on symbologies scanned*
Must be configured in Wedge mode
Must be configured to report AIM code
Symbologies appropriate to the region must be enabled

*2D barcode scanner available as part of Codonics AT-Accessory Kit



17991 Englewood Drive
Middleburg Heights, OH 44130 USA
(440) 243-1198
(440) 243-1334 Fax
Email info@codonics.com
www.codonics.com

Call Codonics at +1.440.243.1198 / 800.444.1198 or visit www.safelabel.com for more information.

All registered and unregistered trademarks are the property of their respective owners. Specifications subject to change without notice. Patent Pending. Printed in the U.S.A. Copyright © 2011 Codonics Inc. 7/2011