

SLS-WAVE™ Administration Scanner

Overview

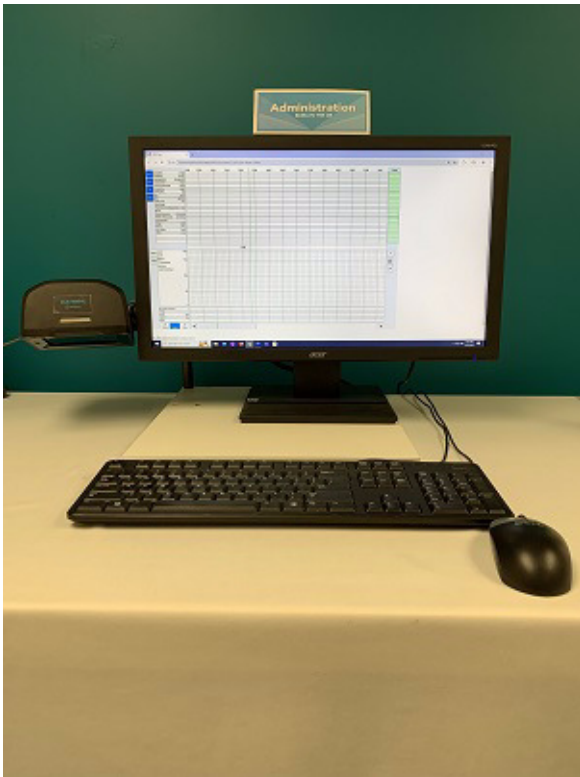
- ◆ The Codonics SLS-WAVE Point of Administration Scanner starting with serial numbers 25 (e.g. produced in 2025) or greater is used in conjunction with the Safe Label System® (SLS) Point of Care Station (PCS) and integrates with Cerner's SurgiNet Anesthesia Information Management System (AIMS). The SLS and SLS-WAVE are used together in the operating room to improve safety and provide accurate, electronic documentation at the time of preparation and administration.

Hardware Setup - SLS-WAVE/AIMS

1. Determine the location where the SLS-WAVE will be installed. For example, below an AIMS monitor or connected to an IV pole.

Note: An open USB port is required to connect SLS-WAVE into the computer where the AIMS application is operated.

2. By default, the SLS-WAVE is shipped as if you are going to connect it to the left-side of the AIMS monitor or to an IV pole (see section Connecting to an IV pole).



SLS-WAVE Hardware Unpacking

1. Remove all the components from the box. It should include:

- ◆ SLS-WAVE scanner (1)



- ◆ Back mounting bracket assembly (1)



- ◆ Clamp mounting assembly (1)



- ◆ Plastic bag containing a Hex L-key (1) and screw (1) for the back of the mounting bracket.



2. After opening and unpacking both of the internal boxes, turn the lever on the clamp to loosen the clamping jaw.



3. Rotate the mounting platform interface (arrow) as needed by rotating the locking wheel counterclockwise as shown below.



4. If the mounting location is the left-side of the AIMS monitor, then continue with the section Connecting to the left-side of an AIMS monitor. If connecting to the right-side of the AIMS monitor, then go to the section Connecting to the right-side of an AIMS monitor. If connecting to an IV pole, then go to section Connecting to an IV pole below..

Note: A T-15 driver not included maybe required for installation.

Connecting to the left-side of an AIMS monitor

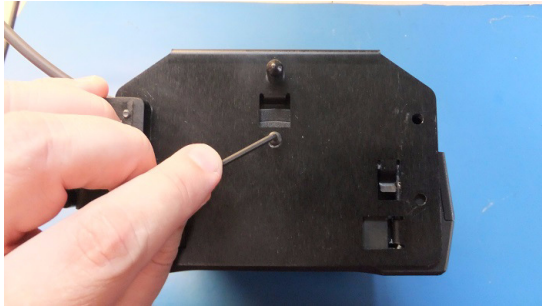
1. Rotate the ratchet handle on the clamp to open up the jaws. Connect the clamp mounting assembly to the left-side of the monitor bracket and secure the clamp tightly by turning the ratchet handle.



2. Next, connect the back mounting plate to the scanner by pressing and sliding down the tabs into the back of the SLS-WAVE. Make sure that the USB cable is routed over the bracket as shown below.



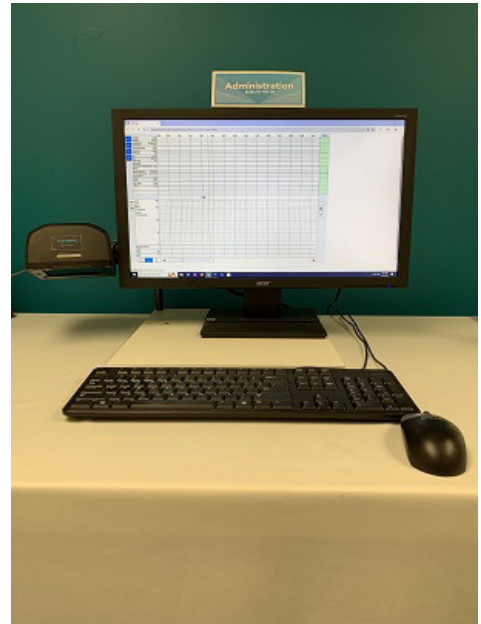
3. Insert the screw through the mounting bracket and tighten to the SLS-WAVE scanner with the L-key.



4. Next, remove the protective film liner from the SLS-WAVE. Attach the SLS-WAVE assembly to the clamp mount assembly, already attached to the monitor, by rotating the platform thumb wheel as shown below.



5. SLS-WAVE mounted to the left-side of the monitor.



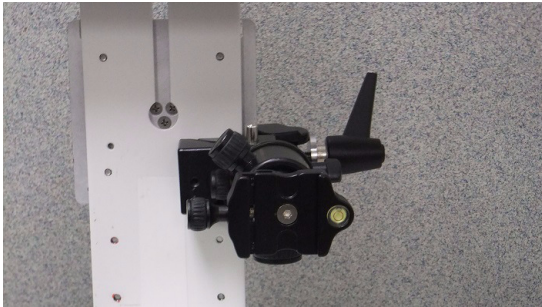
WARNING: The scanner should be pointing down and positioned to keep the scanner light from shining in the patient's or user's eyes.

6. Insert the SLS-WAVE USB into the AIMS computer.

Note: USB extension cords are available if required to reach from the SLS-WAVE to the AIMS computer. They can be ordered using Codonics Part Number SLS-WAVE-USB-EXT.

Connecting to the right-side of an AIMS monitor

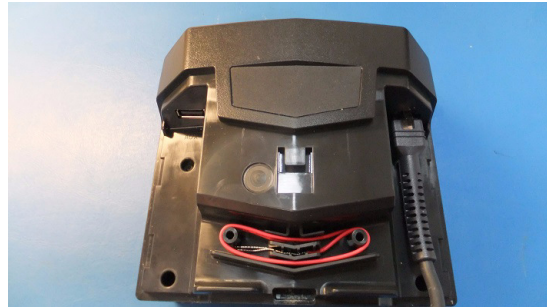
1. Rotate the ratchet handle on the clamp to open up the jaws. Connect the clamp mounting assembly to the right-side of the monitor bracket and secure the clamp tightly by turning the ratchet handle.



2. Unscrew the thick bracket from the mounting plate using a T-15 driver (not included) as shown below and move it to the other side of the mounting plate. Using the T-15 driver, screw the thick bracket back into the mounting plate.



3. Remove the top of the SLS-WAVE and move the cable to the other side of the scanner. Slide the top back on the scanner.



4. Next, connect the back mounting plate by pressing and sliding down the tabs into the back of the SLS-WAVE. Make sure that the USB cable is routed over the bracket as shown below.

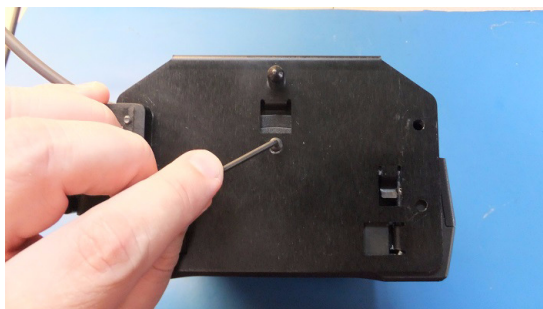


Connecting to an IV Pole

1. Rotate the ratchet handle on the clamp to open up the jaws. Connect the clamp mount assembly to the IV pole and secure the clamp tightly by turning the ratchet handle.
2. Next, connect the back mounting plate to the scanner by pressing and sliding down the tabs into the back of the SLS-WAVE. Make sure that the USB cable is routed over the bracket as shown below.



3. Insert the screw through the mounting bracket and tighten to the SLS-WAVE scanner with the L-key.



4. Next, remove the protective film liner from the SLS-WAVE. Attach the SLS-WAVE assembly to the clamp mount assembly, already attached to the IV pole, by rotating the platform thumbnail as shown below.



5. The SLS-WAVE is now mounted to the IV pole.



WARNING: The scanner should be pointing down and positioned to keep the scanner light from shining in the patient's or user's eyes.

6. Insert the SLS-WAVE USB into the AIMS computer.

Note: USB extension cords are available if required to reach from the SLS-WAVE to the AIMS computer. They can be ordered using Codonics Part Number SLS-WAVE-USB-EXT.

Note: The SLS-WAVE can be set to one of three levels of beep volume when scanning: high, medium, or low. To change the volume, press the button on the right front corner of the SLS-WAVE to the required level.

Configuring SLS-WAVE with Cerner

1. Work with your Cerner representative to ensure

SurgiNet system is configured for scanning and that the

minimum software installed is January 2018 or newer.

2. SLS-WAVE is delivered configured to support scanning of 1-D and 2-D barcodes. If at some point the SLS-WAVE needs to be configured again, then scan the following barcode.



3. SLS-WAVE can parse the 10-digit CID from the Extended Barcode Data (#8 barcode definition in the Administration Tool) and can scan 2D Data Matrix, GS1 Data Matrix and Aztec barcodes.

Cleaning SLS-WAVE

To clean the system, use a clean, lint-free cloth moistened with one of the following approved cleaning agents:

- ◆ Bleach and water (1:5)
- ◆ 70% isopropyl alcohol
- ◆ Super sani cloth

Technical Support

If problems occur during installation or operation, contact Codonics Technical Support at any time.

Phone: +1.440.243.1198

Email: support@codonics.com

Website: www.codonics.com

Note: The SLS-WAVE device serial number begins with 25 or greater to designate the year produced (e.g., 2025) and has a rectangle brand SLS-WAVE label on the front face of the device..

Get it all with just one call
800.444.1198

All registered and unregistered trademarks are the property of their respective owners. Specifications subject to change without notice.
Patents: www.codonics.com/ip/patents.

Copyright © 2017-25 Codonics, Inc. Printed in the U.S.A. Part No. 901-303-001.03.



17991 Englewood Drive
Middleburg Heights, OH
44130 USA
+1.440.243.1198
+1.440.243.1334 Fax
Email info@codonics.com
www.codonics.com

Codonics Trading Co, Ltd.
317 Xianxia Rd. Building B
Unit 1412
Changning Dist., Shanghai
P.R. China, 200051
86-21-62787701
86-21-62787719 Fax

Codonics Limited KK
AQUACITY 9F,
4-16-23, Shibaura
Minato-ku, Tokyo,
108-0023 JAPAN
81-3-5730-2297
81-3-5730-2295 Fax