

# Codonics® Safe Label System® Administration Tool Software

**Release Notes**

## **Version 2.5.0 Safe Label System Administration Tool Release Notes**

### **Summary**

Version 2.5.0 is a software release for the Codonics Safe Label System® (SLS) Administration Tool (AT). The software is compatible with SLS Point of Care Stations (PCS) installed with 2.5.0 software. As of this release, this version of software is considered the most current, stable, safe and effective version for SLS PCS.

This document provides information about New Features (i.e., Adaptive Updates), Product Improvements (i.e., Perfective Updates) and Product Corrections (i.e., Corrective Updates) in 2.5.0 SLS AT software.

**NOTE:** The AT Server application provides all the same capabilities as the existing AT Stand-alone application. As of 2.5.0, the AT Stand-alone application is no longer supported.

**WARNING:** If you're using WIN 10 as your computer's operating system to run the AT, pay careful attention to uninstalling previous versions (prior to 2.5.0) of the AT. WIN 10 can inadvertently uninstall the current version (i.e., 2.5.0) of the AT. Contact Codonics Tech Support with questions about the correct process.

The SLS AT User's Manual version 1.3.0 and User's Manual Addendum 1.8.0 provides further information about the AT.

### **Recommended - Requirements for AT Server:**

**Processor:** Xeon W-2135 @ 3.70GHz, Core i7-7700 @ 3.60GHz or faster. Four (4) cores.

**RAM:** 8 GB for application.

**Application Disk Space:** 30 GB total at install.

### **Minimum - Requirements for AT Server:**

**Processor:** Xeon X5660 @ 2.80 GHz, Core i7-2600 @ 3.40GHz or faster. Four (4) cores.

**RAM:** 6GB for application.

**Application Disk Space:** 10 GB total at install.

### **Additional Information for AT Server:**

**Computer OS:** Windows® 7, Windows 10, Windows Server 2008, 2012R2, 2016 and 2019. 64-bit required.

**Concurrent access:** Not supported.

### **Notes:**

- ◆ For best performance hosting the SLS AT data directory, use a locally attached SSD or high speed RAID.
- ◆ When running the SLS AT on a VM, allocate at least two CPU cores to the VM.
- ◆ When running more than one instance of the SLS AT on the same hosting system, increase the system RAM by at least 3 GB for each additional instance.
- ◆ Both configurations shown are sufficient for running the SLS Email Notifier (EN) on the same system hosting the SLS AT.

### **Recommended - Requirements for AT Client:**

**Browser support:** Internet Explorer IE 11 or newer, Edge, Chrome

**Screen Resolution:** Minimum 1440 x 900; use default browser fonts

**Computer OS:** Windows 7 or newer

**Applications:** Excel 2003 or greater to open reports

### **New Features**

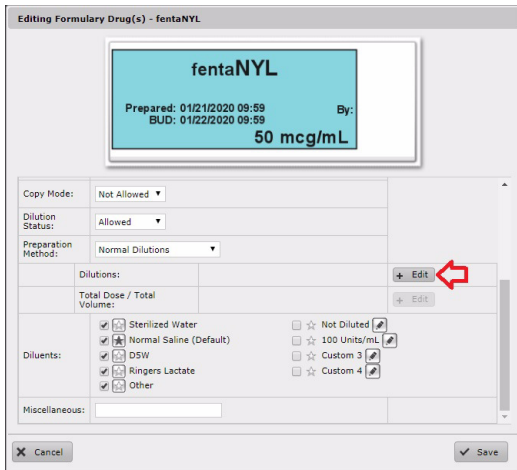
- ◆ **AT Server Manager.** This provides the ability to run the AT Server and setup multiple ATs as servers (e.g., for different formularies). Refer to Administration Tool Server and Server Manager Technical Brief 901-279-004 for details.
- ◆ **The AT now supports use of additional browsers.** Edge and Chrome are now supported.
- ◆ **The AT now provides support for LDAPS.** LDAP (Active Directory) support was provided in 2.4.0 SLS SW. Now encrypted communication (i.e., LDAPS) capability is available.

- ◆ The AT now provides the ability to select a default dilution and diluent per drug. This capability should reduce the number of taps on the SLS PCS touchscreen. When the specific drug is scanned on SLS PCS and a dilution is chosen, the SLS PCS display will look like this:

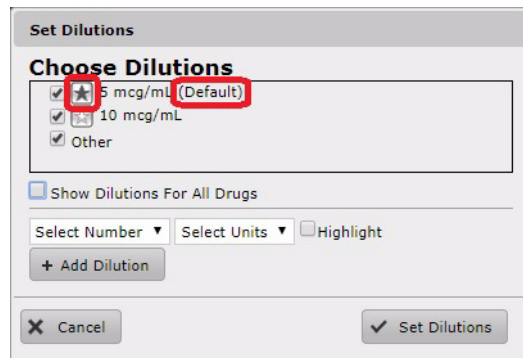


To set the default(s) in the AT:

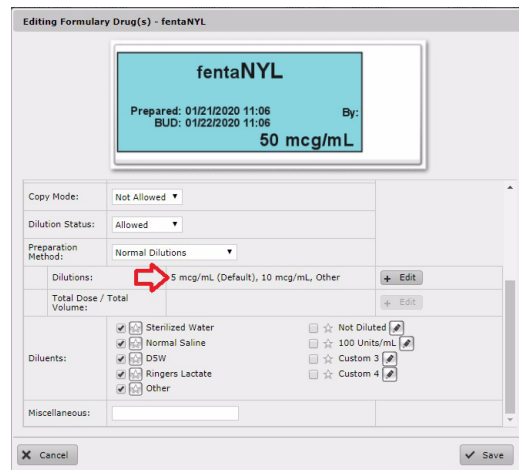
1. Select the drug in the Formulary (e.g. fentaNYL).
2. From the Edit Formulary Drugs screen, select Edit Dilutions.



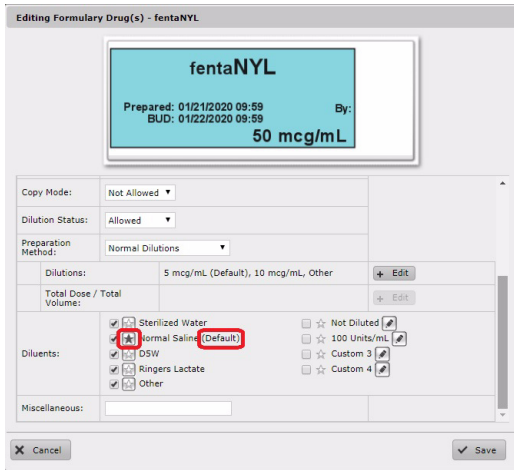
3. If required, add new dilution values, select dilution values that you want displayed on the SLS PCS and then select the star icon for the Default dilution. The Default dilution (i.e., 5 mcg/mL) will be displayed as shown below.



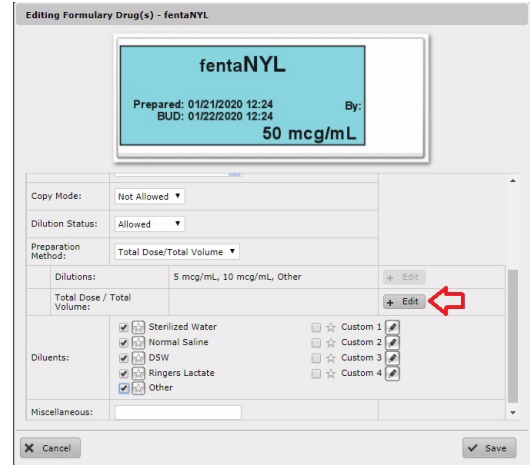
4. Select Set Dilutions. The screen will return to Edit Formulary Drugs and identify the default dilution.



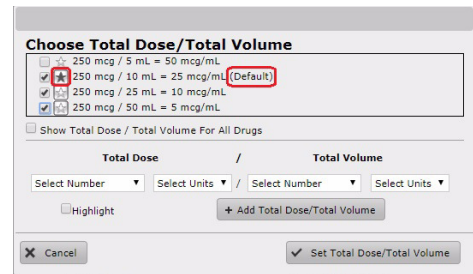
- Now select the Diluents you want displayed on the SLS PCS and select a default Diluent (i.e., Normal Saline) by clicking a star icon.



- From the Edit Formulary Drugs screen, select Edit Total Dose/Total Volume.

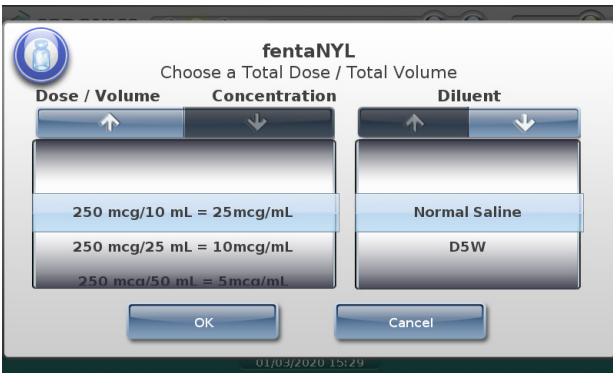


- If required, add new Total Dose/Total Volume values, select Total Dose/Total Volume values that you want displayed on the SLS and then select the star icon for the Default TD/TV. The Default TD/TV (i.e., 250 mcg/10 mL) will be displayed.

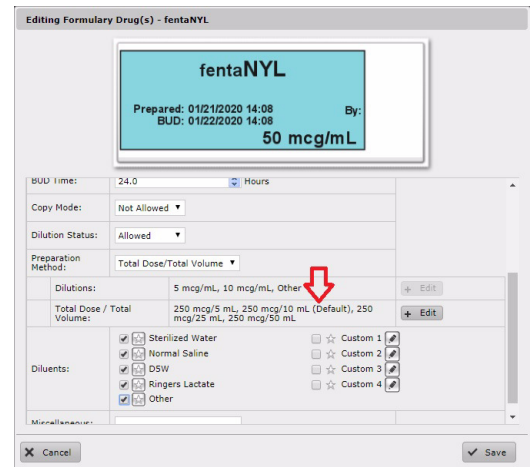


- Select Save. Make any additional changes to the SLS Formulary. Create a Formulary Package and deploy to SLS PCSs.

- ◆ **Provided the ability to select a default TD/TV and diluent per drug.** This capability should reduce the number of taps on the SLS PCS touchscreen. When the specific drug is scanned on SLS and a dilution is chosen, the SLS display will look like this:



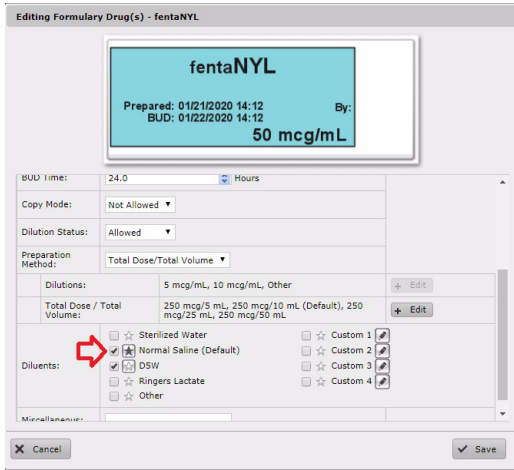
- Select Set Total Dose/Total Volume. The screen will return to Edit Formulary Drugs and identify the Default Total Dose/Total Volume (i.e, 250 mcg/10 mL) as shown below.



To set the default(s) in the AT:

- Select the drug in the Formulary (e.g. fentaNYL).

- Now select the Diluents you want displayed on the SLS PCS and select a default Diluent (i.e., Normal Saline) by clicking a star icon.

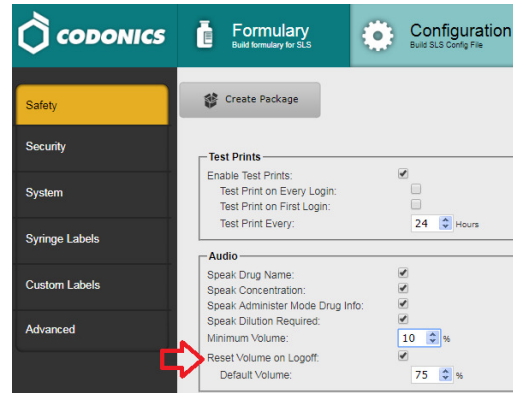


- Select Save. Make any additional changes to the SLS Formulary. Create a Formulary Package and deploy to SLSs.

### Product Improvements

- The SLS PCS can now be configured for a specified volume upon logoff. This improvement allows a user to adjust the volume for their case, but after logging-off, the SLS PCS will reset to a specified volume based on enabling and setting of the Reset Volume on Logoff value in the AT. For example when enabled, if a user turns the volume down on their SLS PCS to 10%, when they log off

SLS PCS the volume will reset to the specified volume (e.g., 75%) in the AT Configuration.



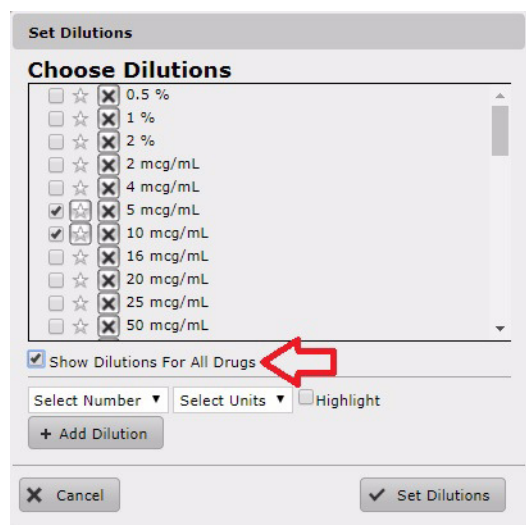
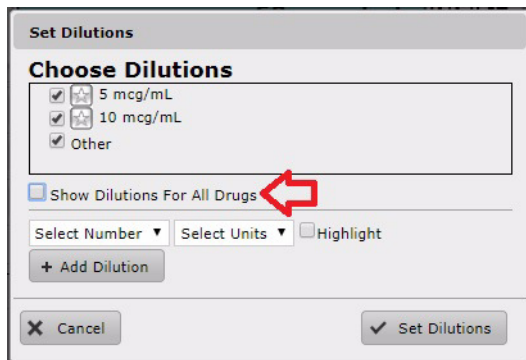
**NOTE:** By default, Reset Volume on Logoff is not enabled, so existing users will not be affected.

To enable, check the box and set the Default Volume value to the % volume (e.g., 75) that the SLS PCS will reset to after a user logs off. You will need to create a new Configuration package and deploy to SLSs.

- The AT provides capability to Add, Edit, Delete Users. Similar to adding, editing, and deleting a drug, the AT now allows you to add or delete user(s) and deploy packages to SLS PCSs. Refer to Codonics Technical Brief 901-284-002 for further details.

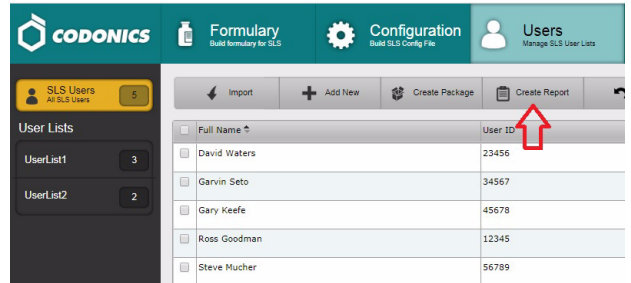
**NOTE:** SLS Centralized User Management requires a feature key for both the AT and for the SLS PCS. Contact your Codonics Sales Representative to obtain the proper keys.

- ◆ The DAT report provides capability to include the SLS Device Name. When using the DAT Tool customers can now see what they have named the SLS PCS (e.g., OR1, OR2, Endo 1 etc.) in addition to the SLS PCS serial number.
- ◆ The AT provides the capability to only display the dilution and TD/TV values for the selected drug in the formulary. Now the dilution dialog only shows dilutions that are assigned to a drug. To preserve existing functionality of being able to delete dilutions and easily add dilutions that have already been defined, a new Show Dilutions For All drugs checkbox (off by default) is provided to display all dilutions as well the delete button.

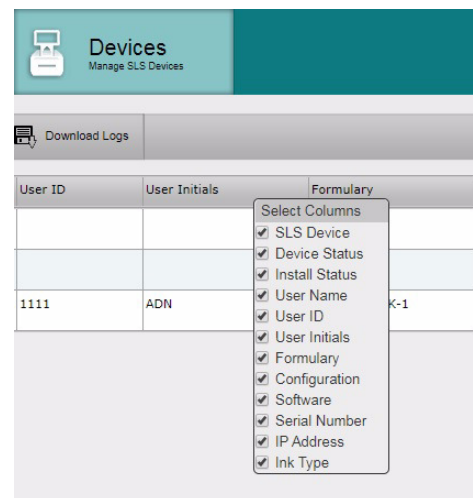
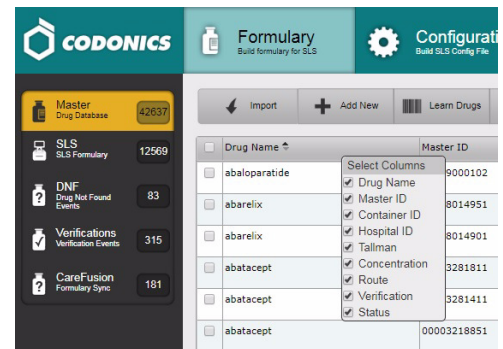


**NOTE:** Deleting a dilution value (i.e., x) will delete the dilution value for all drug entries that use it.

- ◆ The AT provides capability to copy and paste CID entries from the Drug Not Found (i.e., DNF) filter. Users can then look up CIDs easier on FDA.gov, Daily Med or alternative websites to identify what the NDC actually is.
- ◆ The AT now provides a SLS Users Package Report. From the User's Tab, you can create a User's Report. It allows you to see what's changed (i.e., added, edited, deleted) since the last report was generated.



- ◆ The AT provides capability to configure the AT columns. You can now select which columns are displayed in the Formulary (e.g., MDD, SLS Formulary etc) and Devices tab. Right click on any of the columns and a new dialog box will display all the columns. You can select which ones you want displayed by checking/unchecking each box.



- ◆ The AT provides ink cartridge type field in the AT-DM.

User Name	User ID	User Initials	Serial Number	IP Address	Ink Type
ROSS	12345	RSG	144C00001C	10.1.134.185	Type 2
				10.1.134.66	
				10.1.132.82	

- ◆ The AT supports new drug names. The drug names are Allopurinol, Amitriptyline, Amlodipine, Amoxicillin, Amoxicillin-clavulanate, Aspirin, Benzydamine, Bisoprolol, Bevacizumab, Captopril, Cephalexin, Clarithromycin, Clonazepam, Colistimethate, Cyclopentolate, Deferoxamine, Definity, Dibucaine, Dihydroergotamine mesylate, Ifosfamide, Loperamide, Loxapine, Magnesium Hydroxide, Metformin, Methotrimeprazine, Neomycin Polymyxin B Sulfate topical, Oseltamivir, Oxazepam, Pentazocine, Pilocarpine, Pilocarpine ophthalmic, Povidone, Povidone ophthalmic, Pregabalin, Quetiapine, Risankizumab, Rivaroxaban, Silver sulfadiazine, Thrombin topical, Timolol, Tropicamide, Trypan blue, Warfarin, Zopiclone.
- ◆ The AT supports new numbers. 0.45, 0.465, 4.8, 180, 210, and 3200.
- ◆ The AT supports new units. Syringe, Unit/syringe and Units/syringe.

### Product Corrections

- ◆ Moving fields (e.g. Blank, Line, IV etc.) in the Configuration Custom tab is now consistently ordered the same in the drop down of the Drug Not Found Switch Mode in the System tab. Previously, changing the Custom Drug Label (e.g., Blank, Line, IV etc.) order did not always reflect in the order they appeared in the drop down for the Drug Not Found Switch Mode.
- ◆ Users no longer receive an Error Contacting Server (ECS) when switching between Primary Barcode Definitions. Previously this sometimes would occur.
- ◆ Sorting by name in the Drug Classification Templates now works.

Name	Preview	Actions
Anticholinergic Agents		
Beta Blocker		
Epinephrine		
Heparin		
Hypotensive Agents		
Induction Agents		
Local Anesthetics		

- ◆ DNF events are now updated automatically after they are Learned. Previously when Learning a DNF drug that was not in the MDD, the user was prompted with a Create New Drug dialog. After the drug information (i.e., Name, MID, Tallmen, Concentration) was entered and the user saved the information, the Learned drug would not move to the Resolved tab until the user refreshed the page by selecting the Unresolved tab or clicking another tab.
- ◆ Network password Hint is now migrated when updating the AT.
- ◆ The 64-bit version of Office no longer causes an error with the Data Analytics tool (i.e., DAT).
- ◆ Text background color on custom labels now work correctly with template packs. Previously with STD-1, STD-2, and EHR-1 loaded on a system, custom labels with a text background color selected were not rendered or printed properly. In these cases, the label was treated as if it had no text background color selected at all.
- ◆ Zooming in or out in the browser (i.e., IE11) no longer causes the tables to disappear on the Formulary, Configuration, and Devices pages of the AT.
- ◆ Migration to 2.4.0 no longer fails when adding new custom blank label templates if the BLANK label section is renamed.
- ◆ When using AT Learn Drug, scanning GS1 barcoded vials that include hidden characters no longer display as Barcode Invalid. Previously, scanning those same vials into the Configure Barcode Parsing settings dialog would work as expected but not the AT Learn Drug. The AT now properly handles input from a barcode scanner when the barcode has an embedded hidden character (such as GS, Group Separator), or when the barcode scanner sends a control character (such as Ctrl+J for a Newline).
- ◆ The AT now properly handles input from an incompatible barcode and does not disable scanning into the AT Learn Drug dialog. Previously, scanning an incompatible barcode when scanned using the AT Learn Drug would disable scanning ability Learn Drug until the dialog was closed and reopened.
- ◆ The AT now properly handles input from a barcode scanner when there is a white space character in the barcode. Previously, scanning some GS1 barcoded vials into the AT Learn Drug dialog would unexpectedly close the Learn Drug dialog.
- ◆ All time zones now properly work. Previously certain time zones (e.g., US/Eastern) did not always behave as expected on the SLS due to adjustment for daylight savings time.

### **Known Common Issues**

This section details common issues with 2.5.0 AT software that are likely to be experienced by most users. These issues are specific to the current release; previous issues can be found in previous Release Notes. None of the issues included in the document are considered to render the product unsafe or ineffective for clinical use.

- ◆ **WARNING: The formulary report does not sort duplicates.** Duplicate Container IDs in the formulary are reported but are displayed in a way that may not put the duplicates together. You can sort the Excel spreadsheet on Container ID.
- ◆ **WARNING: Replacing drug names with non-Latin characters (e.g., Kanji, Hebrew) causes duplicate drug entries in the MDD.** When the MDD screen is sorted by drug name, changing a drug name to start with a non-Latin character causes the drug to display twice. When the issue occurs, editing either of the duplicate drug entries on the MDD properly changes the other entry. Re-sorting the MDD list or refreshing the MDD by switching to another page in the AT and then back causes the drug name to only display once, sorted after the names that start with Latin characters. If the drug is already in the SLS PCS formulary, then the drug name will display with the changed characters in the formulary and will be listed only once.
- ◆ **WARNING: The pre-import report does not identify duplicate drug IDs when importing via a CSV.** You are required to run a formulary report before generating an approved formulary and should review the Duplicate reports in the Safety worksheet to make sure all duplicates or potential duplicates in the MDD and formulary are identified.

### **Known Uncommon Issues**

This section details uncommon issues with 2.5.0 AT software that are unlikely to be experienced by most users. These issues are specific to the current release; previous issues can be found in previous Release Notes. None of the issues included in the document are considered to render the product unsafe or ineffective for clinical use.

- ◆ **WARNING: A concentration length of greater than 15 characters is converted to an incorrect value in the MDD when imported.** For example, a number such as 12345678901234567890 is converted to 92,233,720,368,547.77.

- ◆ **WARNING: SLS PCS can be muted with a Minimum Volume higher than 0%.** You can still mute the SLS if you manually enter a number of between 1 and 9 in the field. Only use the arrow buttons to set the Minimum Value.
- ◆ **WARNING: If a drug record is modified in the MDD after it has been added to the formulary, the AT does not automatically update the audio file association.** If the drug name is changed in the MDD, the associated audio file will not change, resulting in a possible incorrect association. As a work around, you can either remove and then add the drug to the formulary to trigger a new audio file association, or manually select the correct audio file from the formulary edit dialog box.
- ◆ **WARNING: Combination drugs with long drug names do not display the second drug name. Combination drugs with very long drug names only display the first drug name as truncated.** There is no indication as to what the second drug name is. Users should look to modify the entry of the drug name (e.g. Calcium can be entered as Ca). Another option is to enter the drug name in the Tallman field of the AT which will reduce the font size.
- ◆ **WARNING: Dilution units that are different from the parenteral container do not always provide a warning.** When the initial parenteral unit (e.g., mg) is the same as the first unit in the dilution (e.g., mg/mL) a warning is not provided. However, when the parenteral drug unit is different than the initial dilution units (e.g., parenteral container is g -> diluted container is mg/mL), the AT does provide a warning that they are different units.
- ◆ **WARNING: The sound file colistimethate sounds like colistimothy.**
- ◆ Zooming potentially causes a minor row offset in the AT. This issue occurs only at 110% zoom in Chrome, and Edge (Chromium based). It does not occur in IE 11, Firefox, or older Edge. The AT actions column rows become slightly offset from the rest of the grid in all grids of the AT.
- ◆ Adding invalid feature keys displays a Error Contact Server (ECS). When adding a feature key that has any of the following properties (e.g., Empty field, single or double or special characters, all numbers or mix of numbers and characters) results in the AT displaying an ECS instead of Invalid Feature Key Error message.
- ◆ The Drug Classification templates interface does not always show the correct or any barcode. The 1D barcode in the EHR-1 label template and the 2-D barcode in the STD-1 label template are not always displayed properly.

- ◆ For 2.1.1 through and including 2.2.0 software releases, hidden (i.e., nonbroadcasted) SSIDs for enterprise WiFi require different configuration settings. The set up for the conf and conf.debug file within the certificates folder of each Wifi MAC Folder require an updated entry. Here are the additional network configuration settings required for the files:

wifi.conf

wpa-ssid [HiddenSsid]

wpa-ap-scan 1

wpa-scan-ssid 1

wifi.conf.debug

ap\_scan=1

network={

scan\_ssid=1

Refer to AT User's Manual, Codonics Part Number 905-063-030 section 6, for all other network configuration file settings.

- ◆ Changing barcode parsing rule presets from **US\_NDC** to **Custom** does not warn you that custom rules will be removed.
- ◆ Second preparer's initials are not supported on a small label template pack (e.g., STD-S1 and ZH-S1). Small labels do not support preparer's initials.

### **Technical Support**

If problems occur during software installation or operation, contact Codonics Technical Support at any time.

Phone: +1.440.243.1198

Email: support@codonics.com

Website: www.codonics.com

*Get it all with just one call*  
**800.444.1198**



All registered and unregistered trademarks are the property of their respective owners. Specifications subject to change without notice.  
Patents: www.codonics.com/ip/patents.

Copyright © 2010-2020 Codonics, Inc. Printed in the U.S.A. Part No. 901-245-024.05

17991 Englewood Drive Cleveland, OH 44130 USA +1 (440) 243-1198 +1 (440) 243-1334 Fax Email info@codonics.com www.codonics.com	Codonics Trading Co, Ltd. 317 Xianxia Rd. Building B Unit 1412 Changning Dist., Shanghai P.R. China, 200051 86-21-62787701 86-21-62787719 Fax	Codonics Limited KK AQUACITY 9F, 4-16-23, Shibaura Minato-ku, Tokyo, 108-0023 JAPAN 81-3-5730-2297 81-3-5730-2295 Fax
-----------------------------------------------------------------------------------------------------------------------------------------------	-----------------------------------------------------------------------------------------------------------------------------------------------------------------	-----------------------------------------------------------------------------------------------------------------------------------------